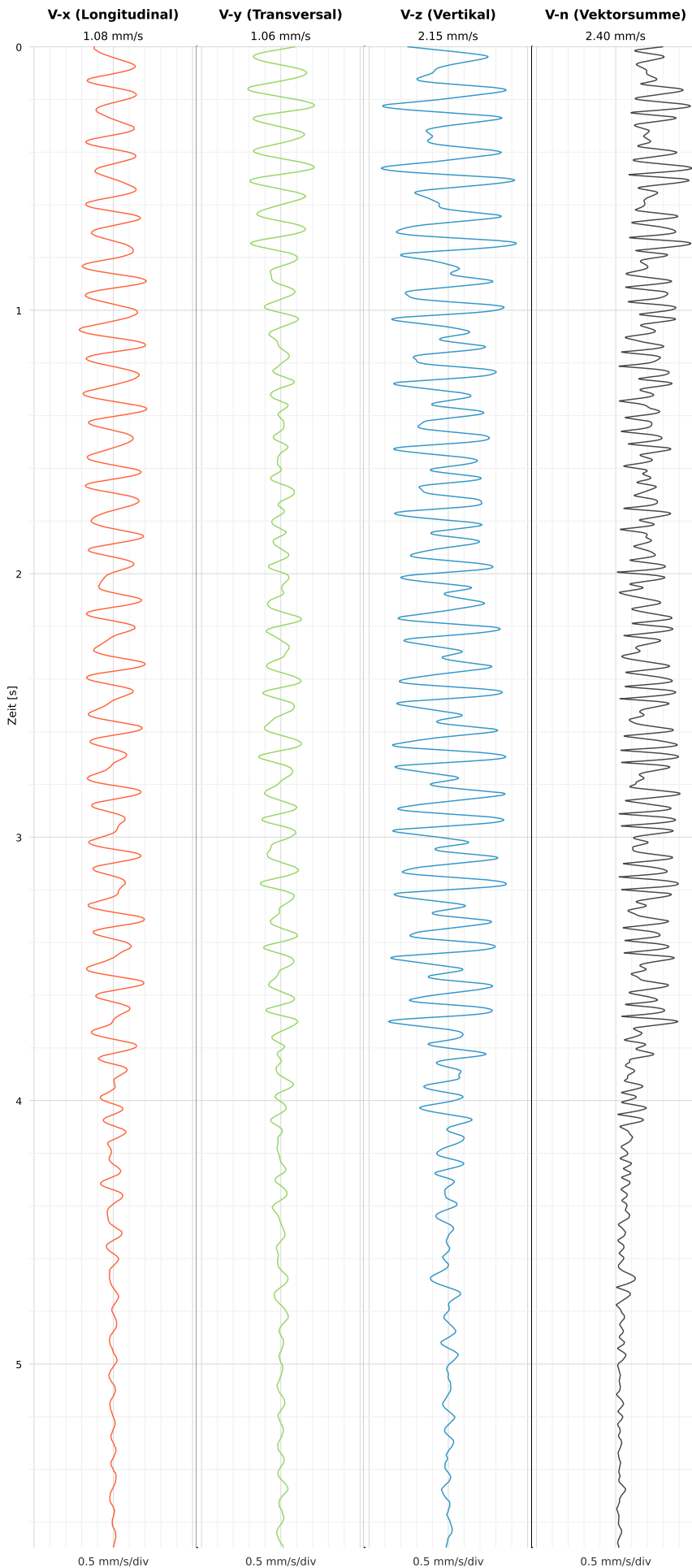


## SCHWINGGESCHWINDIGKEIT

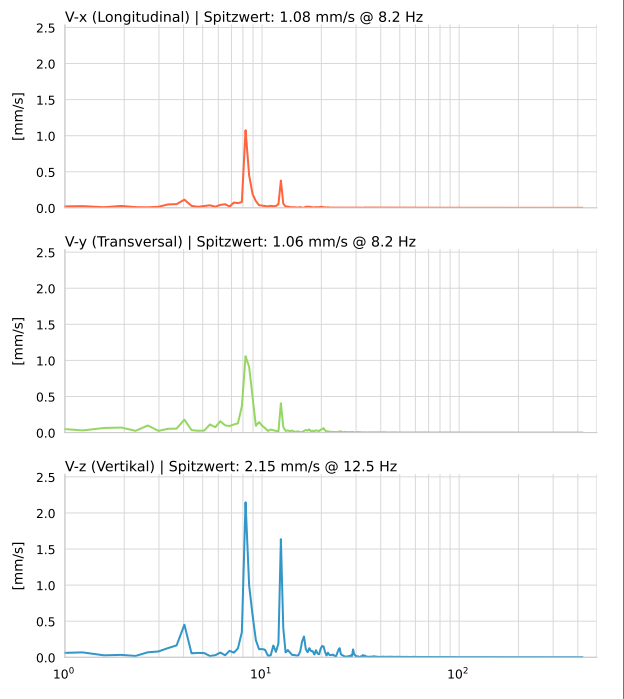


DATEI: 2492-PG-8-12052026-222948\_raw.csv

Aufzeichnungsdauer: 5.70 s | Abtastrate: 1000 Hz

|          |                           |
|----------|---------------------------|
| Datum    | 13.05.2026                |
| Zeit     | 00:29:48                  |
| Event-ID | 2492-PG-8-12052026-222948 |
| Status   | Ereignis                  |
| X        | 1.08 mm/s @ 8.2 Hz        |
| Y        | 1.06 mm/s @ 8.2 Hz        |
| Z        | 2.15 mm/s @ 12.5 Hz       |
| Vn       | 2.40 mm/s @ 12.5 Hz       |

## SPEKTRALANALYSE - KOMPONENTEN FFT



| Kanal | Spitzwert | Spektrum 25% | Spektrum 50% | Spektrum 75% |
|-------|-----------|--------------|--------------|--------------|
| X     | 8.2 Hz    | 8.3 Hz       | 8.6 Hz       | 12.5 Hz      |
| Y     | 8.2 Hz    | 7.9 Hz       | 8.6 Hz       | 12.5 Hz      |
| Z     | 12.5 Hz   | 8.3 Hz       | 12.5 Hz      | 19.8 Hz      |

## SPEKTRALANALYSE - FFT (DIN 4150-3)

