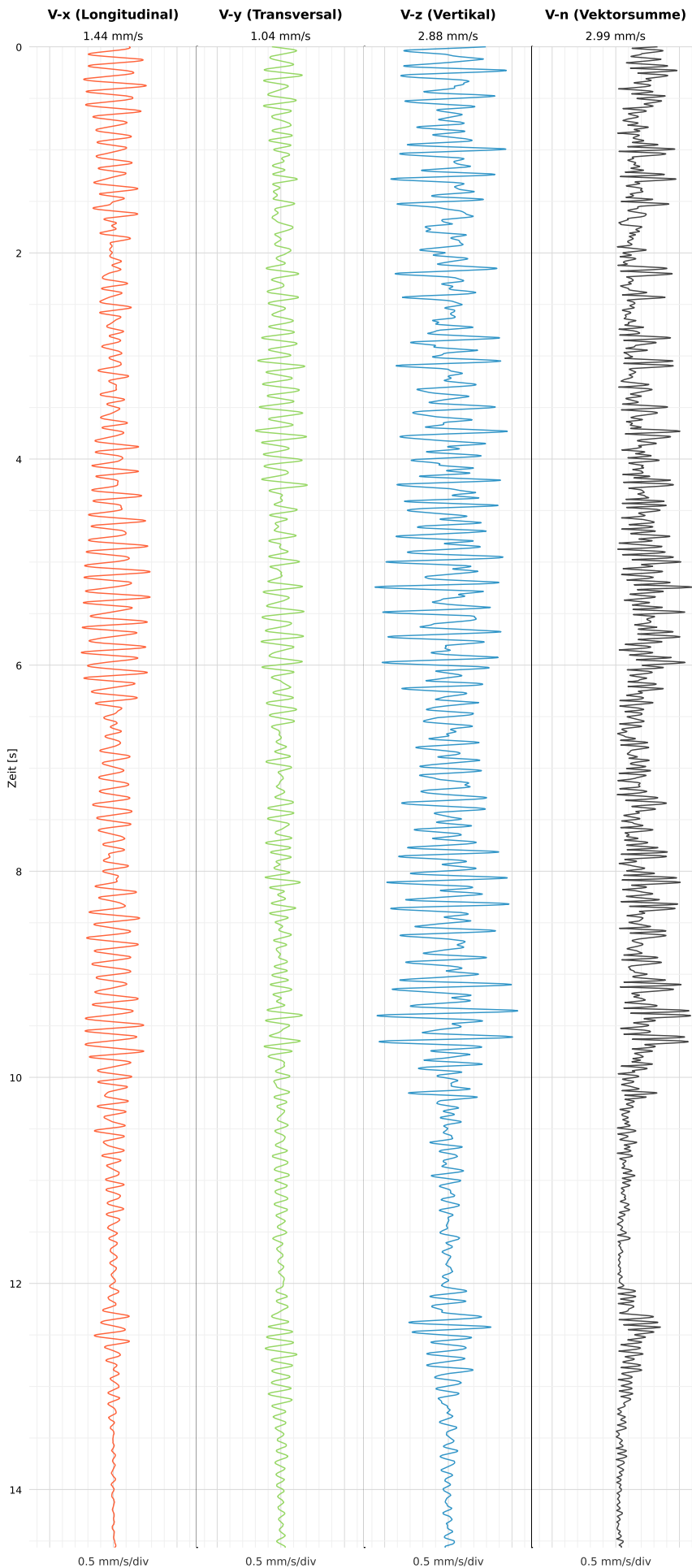


## SCHWINGGESCHWINDIGKEIT

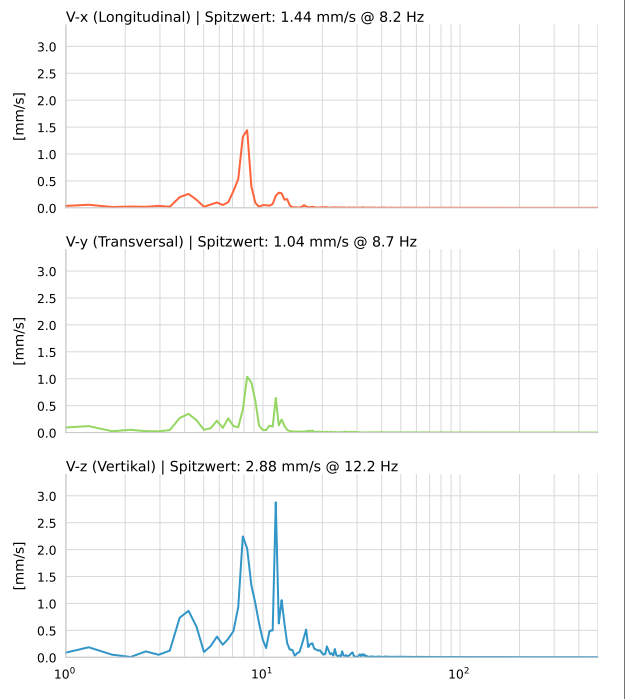


DATEI: 2492-PG-8-13052026-090320\_raw.csv

Aufzeichnungsdauer: 14.56 s | Abtastrate: 1000 Hz

Datum	13.05.2026
Zeit	11:03:20
Event-ID	2492-PG-8-13052026-090320
Status	Ereignis
X	1.44 mm/s @ 8.2 Hz
Y	1.04 mm/s @ 8.7 Hz
Z	2.88 mm/s @ 12.2 Hz
Vn	2.99 mm/s @ 12.2 Hz

## SPEKTRALANALYSE - KOMPONENTEN FFT



Kanal	Spitzwert	Spektrum 25%	Spektrum 50%	Spektrum 75%
X	8.2 Hz	7.5 Hz	8.3 Hz	12.0 Hz
Y	8.7 Hz	7.1 Hz	8.7 Hz	12.0 Hz
Z	12.2 Hz	7.9 Hz	10.8 Hz	15.7 Hz

## SPEKTRALANALYSE - FFT (DIN 4150-3)

