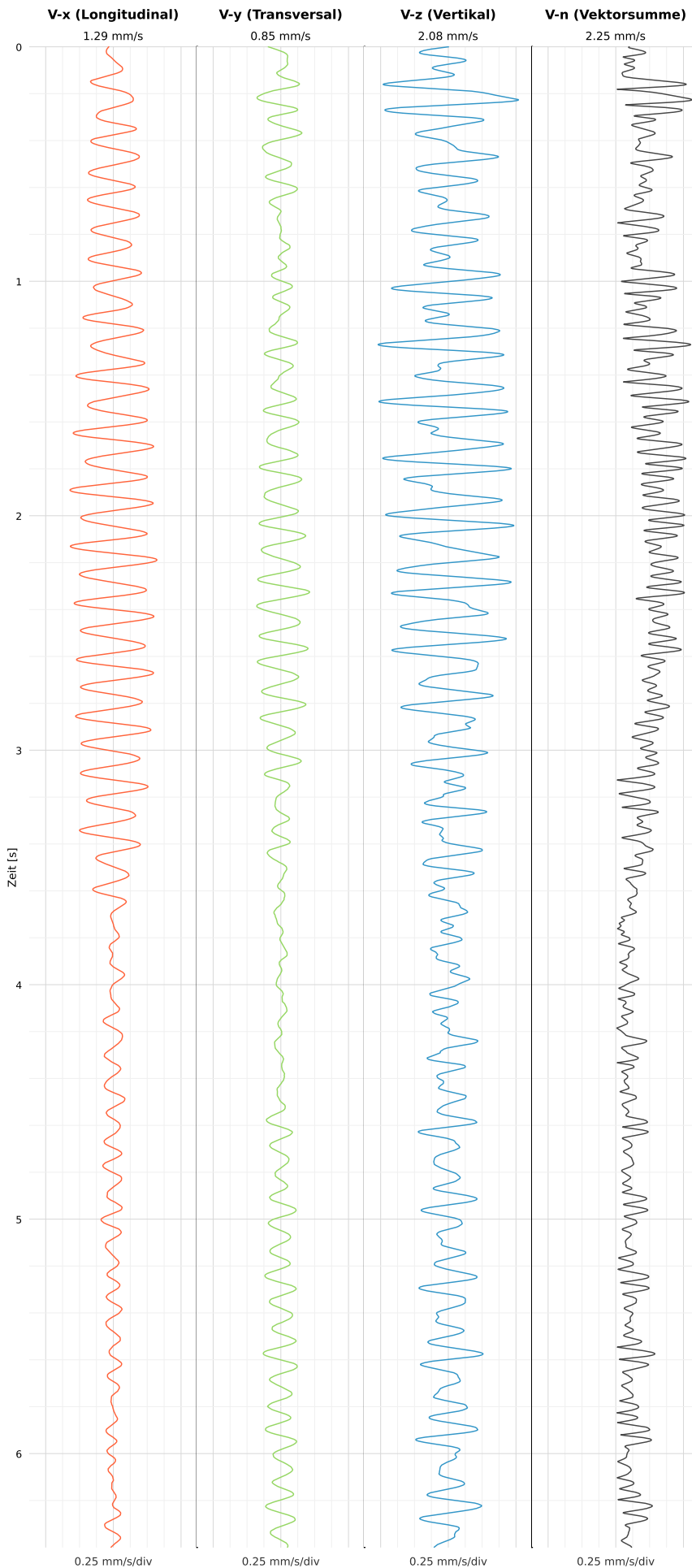


## SCHWINGGESCHWINDIGKEIT

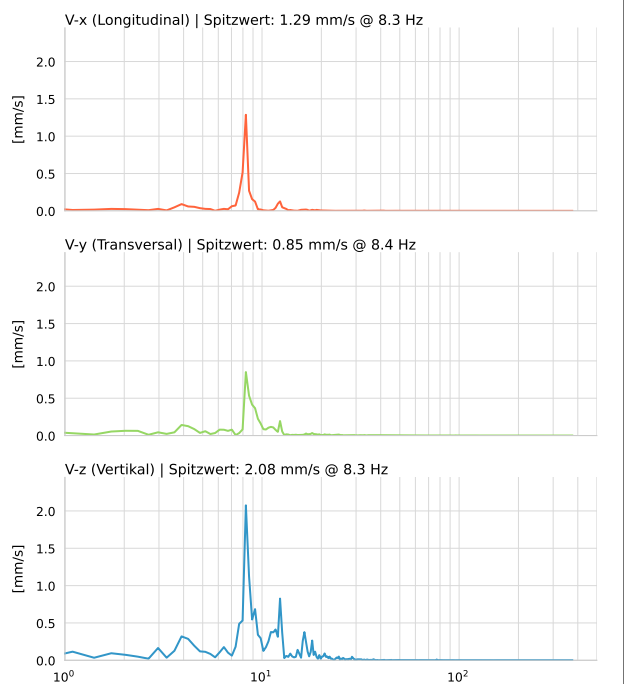


DATEI: 2492-PG-8-13052026-091545\_raw.csv

Aufzeichnungsdauer: 6.40 s | Abtastrate: 1000 Hz

Datum	13.05.2026
Zeit	11:15:45
Event-ID	2492-PG-8-13052026-091545
Status	Ereignis
X	1.29 mm/s @ 8.3 Hz
Y	0.85 mm/s @ 8.4 Hz
Z	2.08 mm/s @ 8.3 Hz
Vn	2.25 mm/s @ 8.3 Hz

## SPEKTRALANALYSE - KOMPONENTEN FFT



Kanal	Spitzwert	Spektrum 25%	Spektrum 50%	Spektrum 75%
X	8.3 Hz	8.0 Hz	8.3 Hz	8.9 Hz
Y	8.4 Hz	8.3 Hz	9.2 Hz	14.2 Hz
Z	8.3 Hz	8.3 Hz	9.5 Hz	14.2 Hz

## SPEKTRALANALYSE - FFT (DIN 4150-3)

