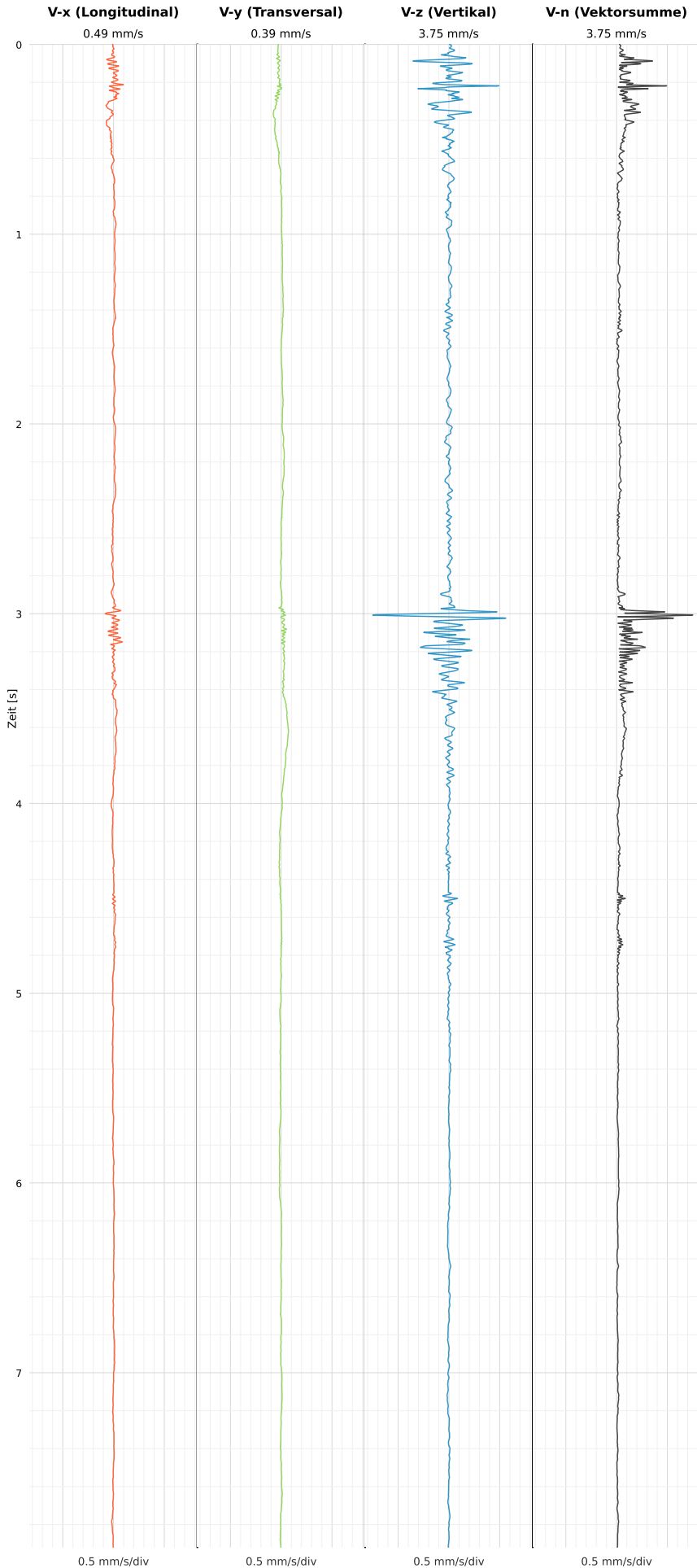


## SCHWINGGESCHWINDIGKEIT

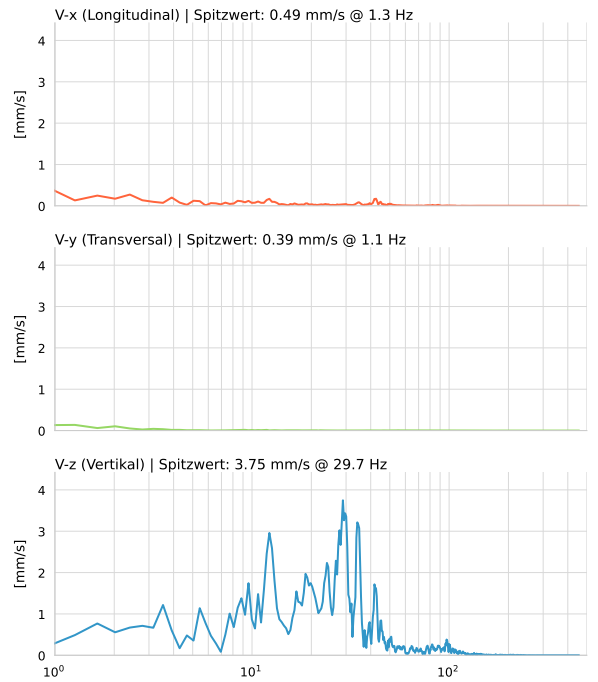


DATEI: 2492-PG-8-13052026-101021\_raw.csv

Aufzeichnungsdauer: 7.92 s | Abtastrate: 1000 Hz

Datum	13.05.2026
Zeit	12:10:21
Event-ID	2492-PG-8-13052026-101021
Status	Ereignis
X	0.49 mm/s @ 1.3 Hz
Y	0.39 mm/s @ 1.1 Hz
Z	3.75 mm/s @ 29.7 Hz
Vn	3.75 mm/s @ 29.7 Hz

## SPEKTRALANALYSE - KOMPONENTEN FFT



Kanal	Spitzwert	Spektrum 25%	Spektrum 50%	Spektrum 75%
X	1.3 Hz	5.4 Hz	22.9 Hz	44.1 Hz
Y	1.1 Hz	0.5 Hz	3.5 Hz	46.7 Hz
Z	29.7 Hz	18.7 Hz	28.5 Hz	39.9 Hz

## SPEKTRALANALYSE - FFT (DIN 4150-3)

