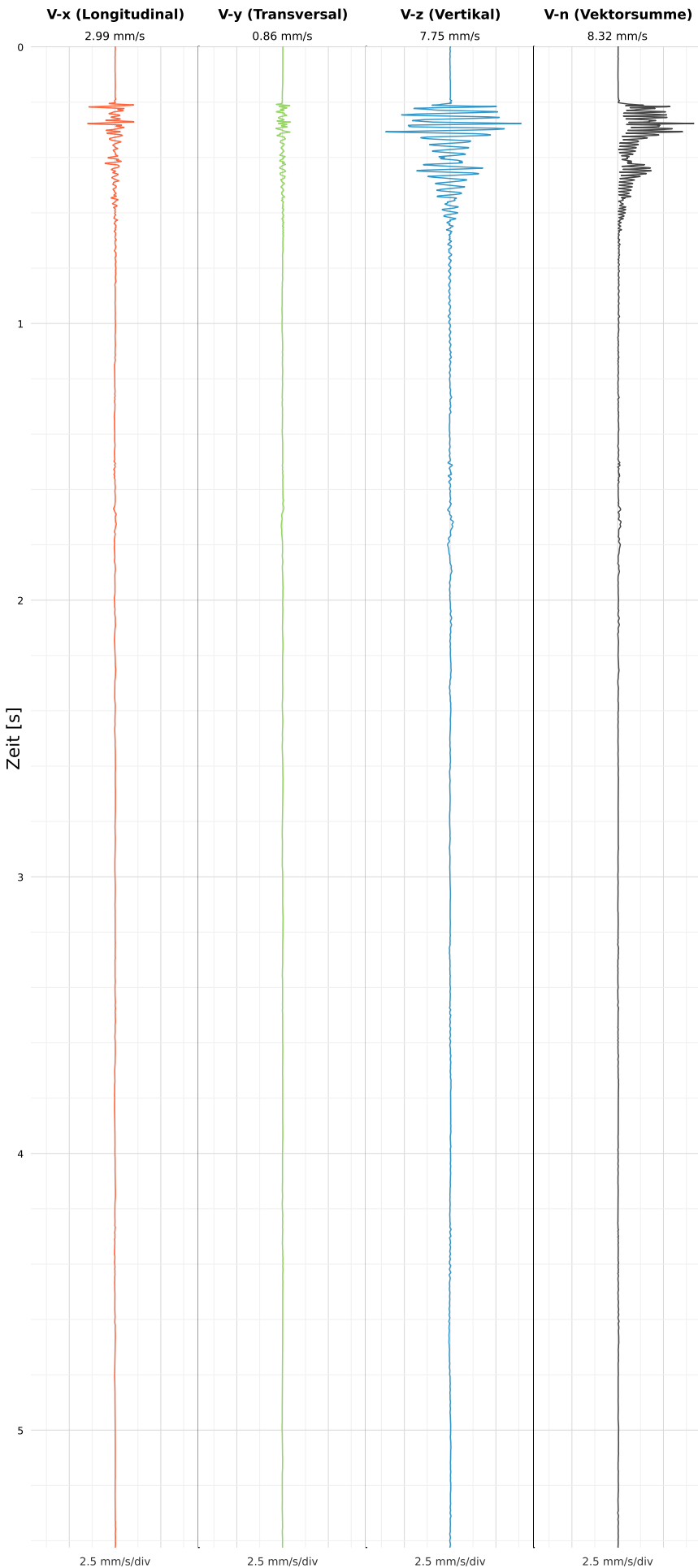


SCHWINGGESCHWINDIGKEIT



DATEI: 2492-PG14-26052026-143057\_raw.csv

Aufzeichnungsdauer: 5.42 s | Abtastrate: 1000 Hz

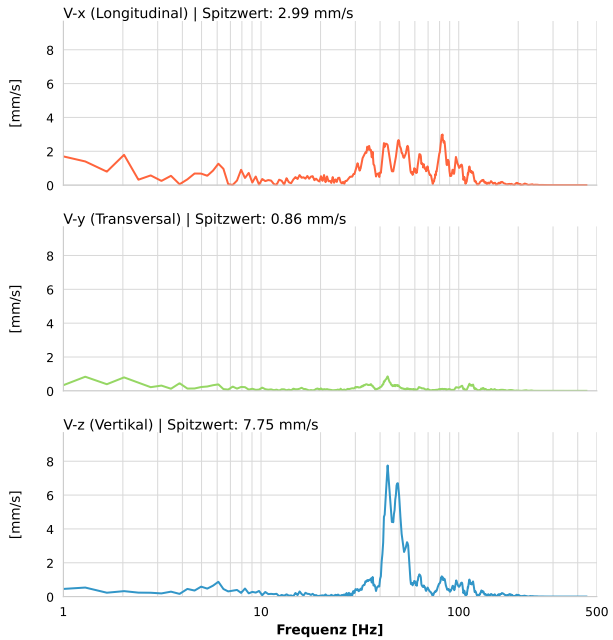
|                  |                           |
|------------------|---------------------------|
| Datum:           | 10.06.2026                |
| Zeit:            | 08:07:25                  |
| Event-ID:        | 2492-PG14-26052026-143057 |
| Kalibrier Datum: | 12.07.2025                |

Spitzwerte

| V-x (Longitudinal) | V-y (Transversal) | V-z (Vertikal)   |
|--------------------|-------------------|------------------|
| 2.99 mm/s          | 0.86 mm/s         | 7.75 mm/s        |
| 82.6 Hz            | 43.7 Hz           | 43.7 Hz          |
| 16.39% von Limit   | 6.39% von Limit   | 57.73% von Limit |

V-n (Vektorsumme): 8.32 mm/s

SPEKTRALANALYSE - KOMPONENTEN FFT



| Kanal | Spitzwert | Spektrum 25% | Spektrum 50% | Spektrum 75% |
|-------|-----------|--------------|--------------|--------------|
| X     | 2.99 mm/s | 43.7 Hz      | 65.8 Hz      | 93.1 Hz      |
| Y     | 0.86 mm/s | 36.7 Hz      | 64.3 Hz      | 115.2 Hz     |
| Z     | 7.75 mm/s | 44.4 Hz      | 50.7 Hz      | 82.0 Hz      |

SPEKTRALANALYSE - FFT (DIN 4150-3)

