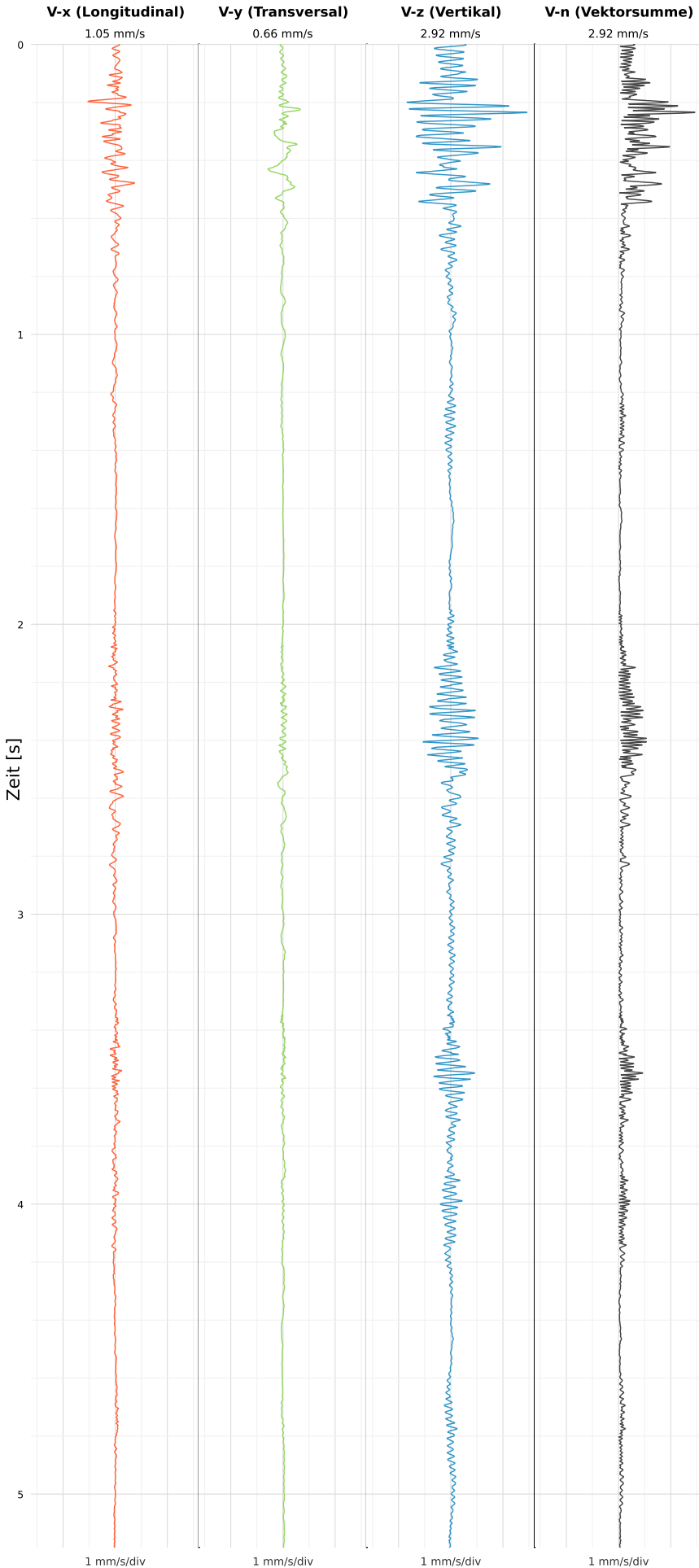


SCHWINGGESCHWINDIGKEIT



DATEI: 2492-PG14-26052026-143547\_raw.csv

Aufzeichnungsdauer: 5.18 s | Abtastrate: 1000 Hz

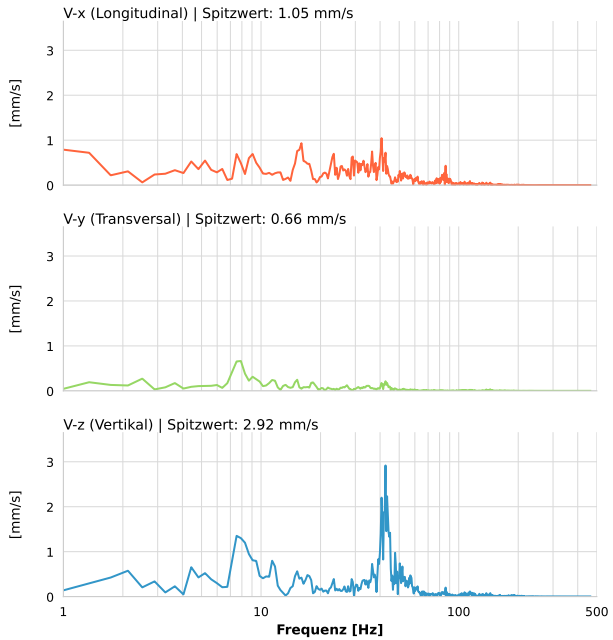
|                  |                           |
|------------------|---------------------------|
| Datum:           | 26.05.2026                |
| Zeit:            | 14:35:47                  |
| Event-ID:        | 2492-PG14-26052026-143547 |
| Kalibrier Datum: | 12.07.2025                |

Spitzwerte

| V-x (Longitudinal) | V-y (Transversal) | V-z (Vertikal)   |
|--------------------|-------------------|------------------|
| 1.05 mm/s          | 0.66 mm/s         | 2.92 mm/s        |
| 40.7 Hz            | 7.9 Hz            | 42.6 Hz          |
| 8.25% von Limit    | 13.28% von Limit  | 22.17% von Limit |

V-n (Vektorsumme): 2.92 mm/s

SPEKTRALANALYSE - KOMPONENTEN FFT



| Kanal | Spitzwert | Spektrum 25% | Spektrum 50% | Spektrum 75% |
|-------|-----------|--------------|--------------|--------------|
| X     | 1.05 mm/s | 16.4 Hz      | 34.5 Hz      | 55.0 Hz      |
| Y     | 0.66 mm/s | 8.7 Hz       | 23.3 Hz      | 44.9 Hz      |
| Z     | 2.92 mm/s | 22.6 Hz      | 42.2 Hz      | 51.9 Hz      |

SPEKTRALANALYSE - FFT (DIN 4150-3)

