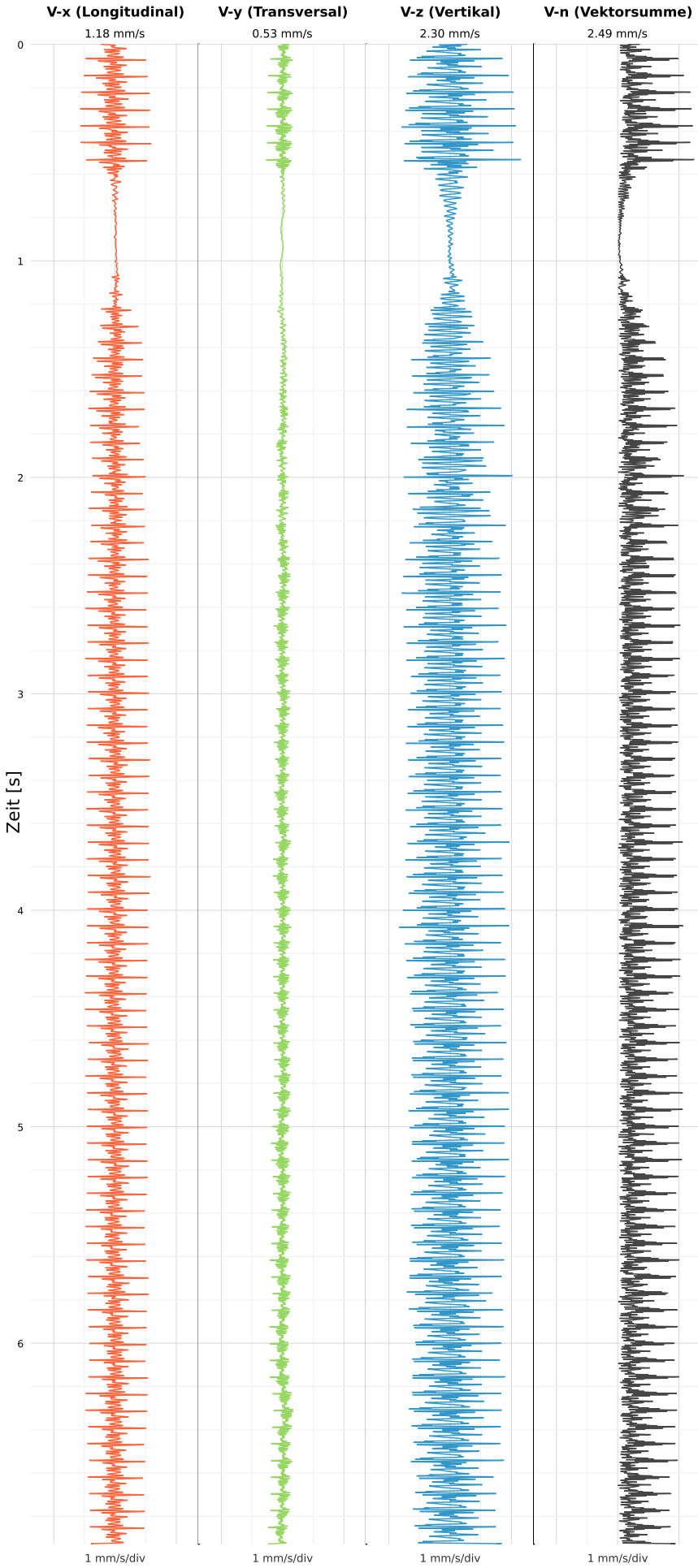


SCHWINGGESCHWINDIGKEIT



DATEI: 2492-PG14-26052026-152237\_raw.csv

Aufzeichnungsdauer: 6.93 s | Abtastrate: 1000 Hz

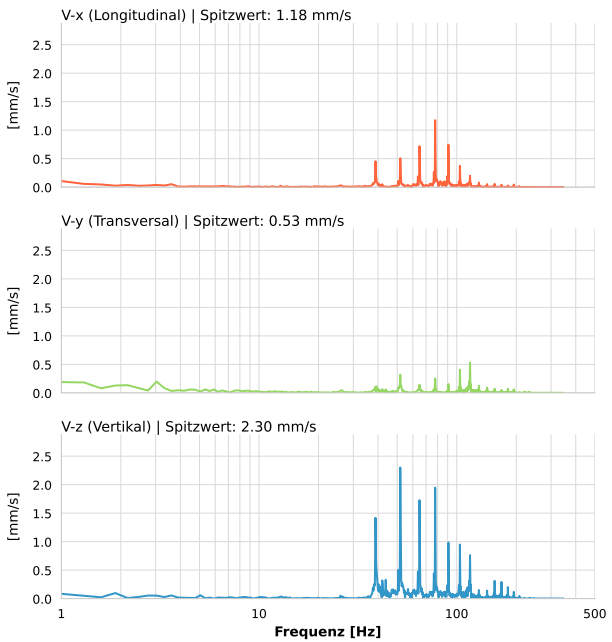
|                  |                           |
|------------------|---------------------------|
| Datum:           | 26.05.2026                |
| Zeit:            | 15:22:37                  |
| Event-ID:        | 2492-PG14-26052026-152237 |
| Kalibrier Datum: | 12.07.2025                |

Spitzwerte

| V-x (Longitudinal) | V-y (Transversal) | V-z (Vertikal)   |
|--------------------|-------------------|------------------|
| 1.18 mm/s          | 0.53 mm/s         | 2.30 mm/s        |
| 77.8 Hz            | 116.6 Hz          | 51.8 Hz          |
| 6.61% von Limit    | 2.66% von Limit   | 15.16% von Limit |

V-n (Vektorsumme): 2.49 mm/s

SPEKTRALANALYSE - KOMPONENTEN FFT



| Kanal | Spitzwert | Spektrum 25% | Spektrum 50% | Spektrum 75% |
|-------|-----------|--------------|--------------|--------------|
| X     | 1.18 mm/s | 62.5 Hz      | 78.1 Hz      | 101.8 Hz     |
| Y     | 0.53 mm/s | 50.7 Hz      | 102.9 Hz     | 122.5 Hz     |
| Z     | 2.30 mm/s | 52.1 Hz      | 77.8 Hz      | 111.9 Hz     |

SPEKTRALANALYSE - FFT (DIN 4150-3)

