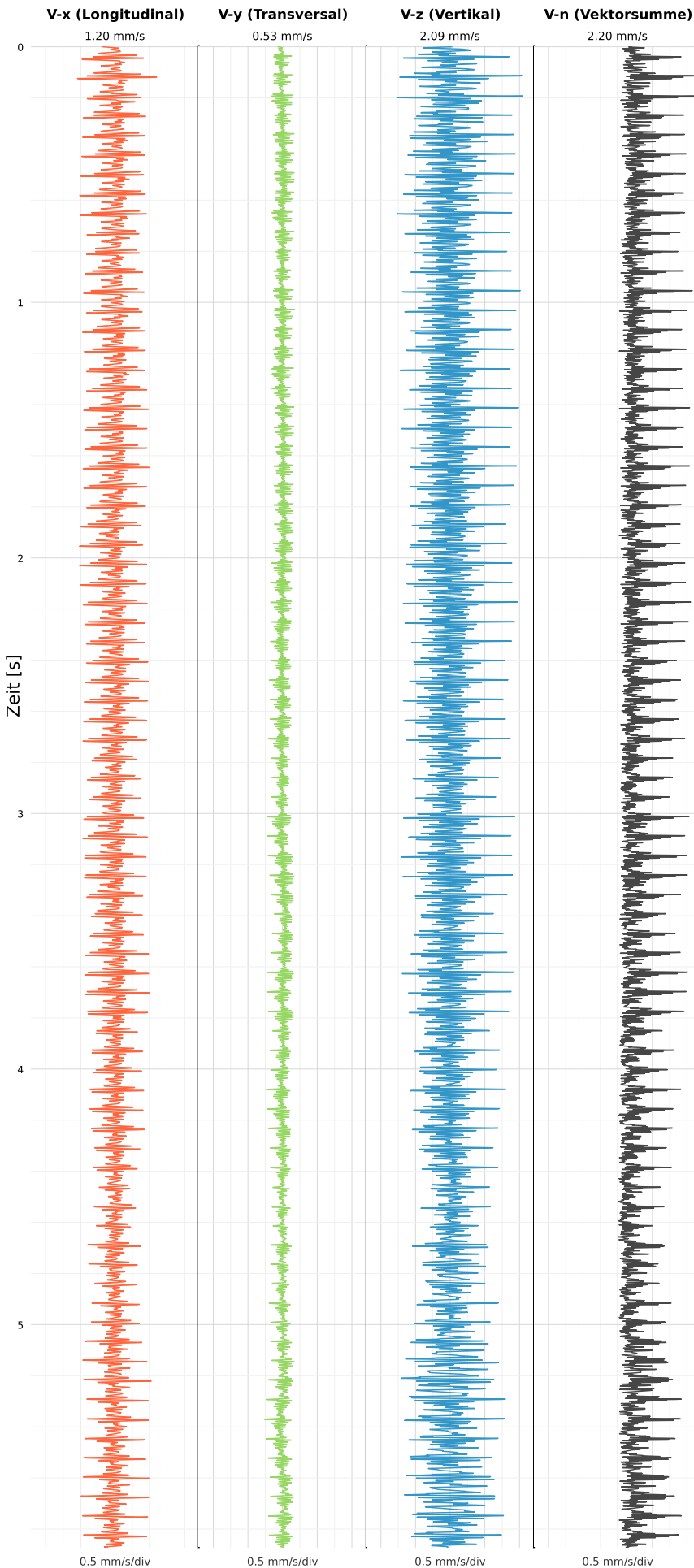


SCHWINGGESCHWINDIGKEIT



DATEI: 2492-PG14-26052026-152404_raw.csv

Aufzeichnungsdauer: 5.87 s | Abtastrate: 1000 Hz

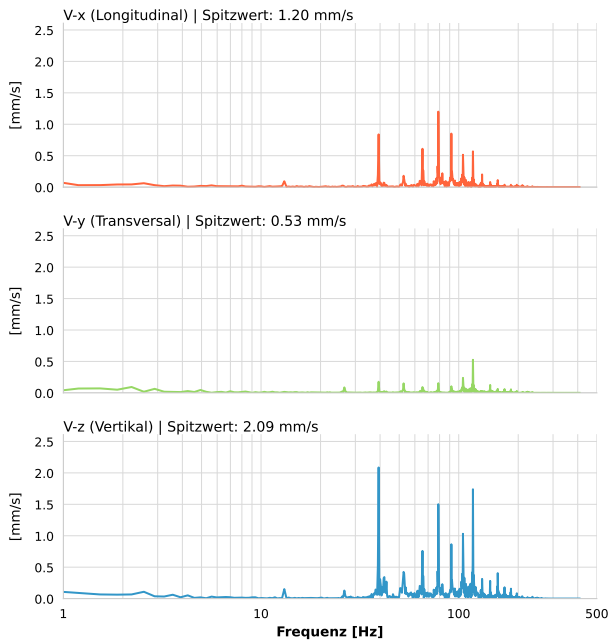
| | |
|------------------|---------------------------|
| Datum: | 26.05.2026 |
| Zeit: | 15:24:04 |
| Event-ID: | 2492-PG14-26052026-152404 |
| Kalibrier Datum: | 12.07.2025 |

Spitzwerte

| V-x (Longitudinal) | V-y (Transversal) | V-z (Vertikal) |
|--------------------|-------------------|------------------|
| 1.20 mm/s | 0.53 mm/s | 2.09 mm/s |
| 78.7 Hz | 118.0 Hz | 39.3 Hz |
| 6.72% von Limit | 2.63% von Limit | 16.91% von Limit |

V-n (Vektorsumme): 2.20 mm/s

SPEKTRALANALYSE - KOMPONENTEN FFT



| Kanal | Spitzwert | Spektrum 25% | Spektrum 50% | Spektrum 75% |
|-------|-----------|--------------|--------------|--------------|
| X | 1.20 mm/s | 66.2 Hz | 89.7 Hz | 110.5 Hz |
| Y | 0.53 mm/s | 66.2 Hz | 109.5 Hz | 136.8 Hz |
| Z | 2.09 mm/s | 64.2 Hz | 94.5 Hz | 119.0 Hz |

SPEKTRALANALYSE - FFT (DIN 4150-3)

