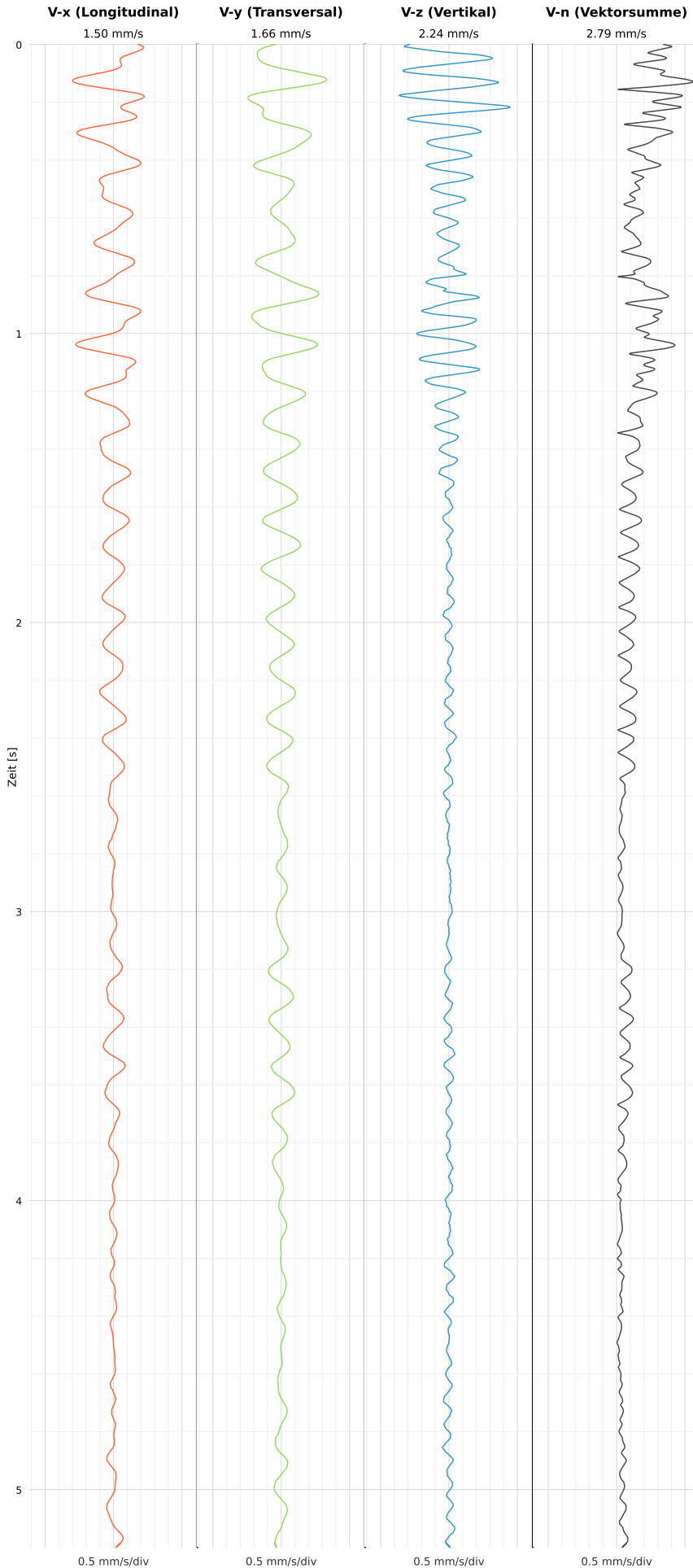


SCHWINGGESCHWINDIGKEIT

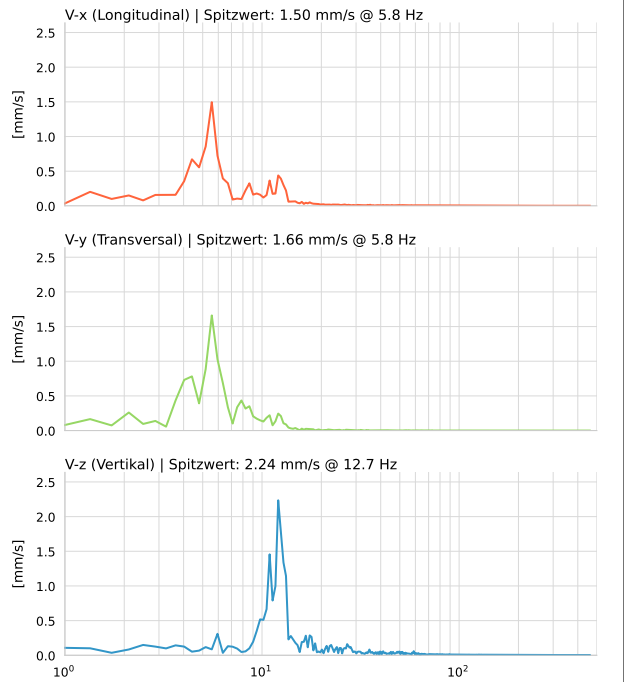


DATEI: 2492-PG8-18052026-145511_raw.csv

Aufzeichnungsdauer: 5.20 s | Abtastrate: 1000 Hz

| | |
|----------|--------------------------|
| Datum | 18.05.2026 |
| Zeit | 14:55:11 |
| Event-ID | 2492-PG8-18052026-145511 |
| Status | Ereignis |
| X | 1.50 mm/s @ 5.8 Hz |
| Y | 1.66 mm/s @ 5.8 Hz |
| Z | 2.24 mm/s @ 12.7 Hz |
| Vn | 2.79 mm/s @ 12.7 Hz |

SPEKTRALANALYSE - KOMPONENTEN FFT



| Kanal | Spitzwert | Spektrum 25% | Spektrum 50% | Spektrum 75% |
|-------|-----------|--------------|--------------|--------------|
| X | 5.8 Hz | 5.2 Hz | 8.2 Hz | 15.5 Hz |
| Y | 5.8 Hz | 4.8 Hz | 5.9 Hz | 8.6 Hz |
| Z | 12.7 Hz | 11.3 Hz | 13.2 Hz | 43.9 Hz |

SPEKTRALANALYSE - FFT (DIN 4150-3)

