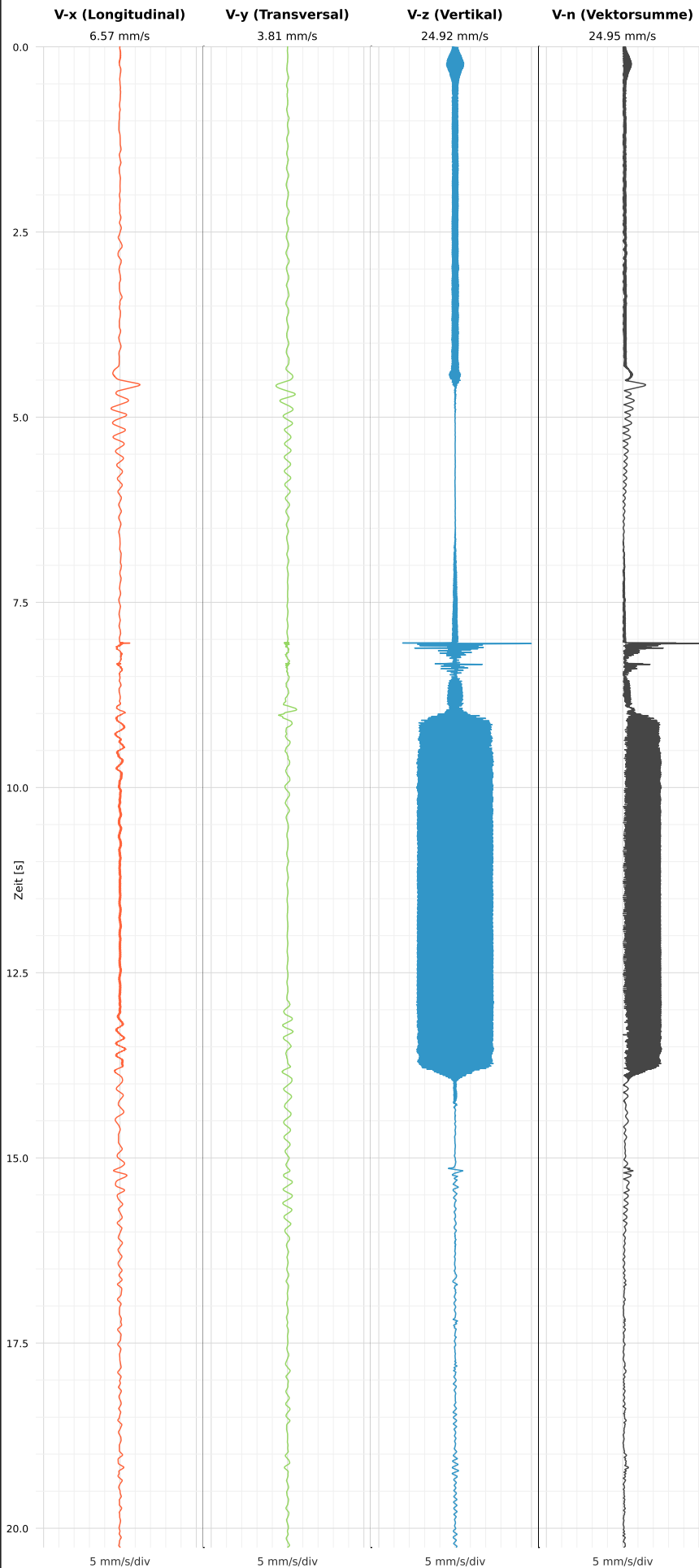


## SCHWINGGESCHWINDIGKEIT

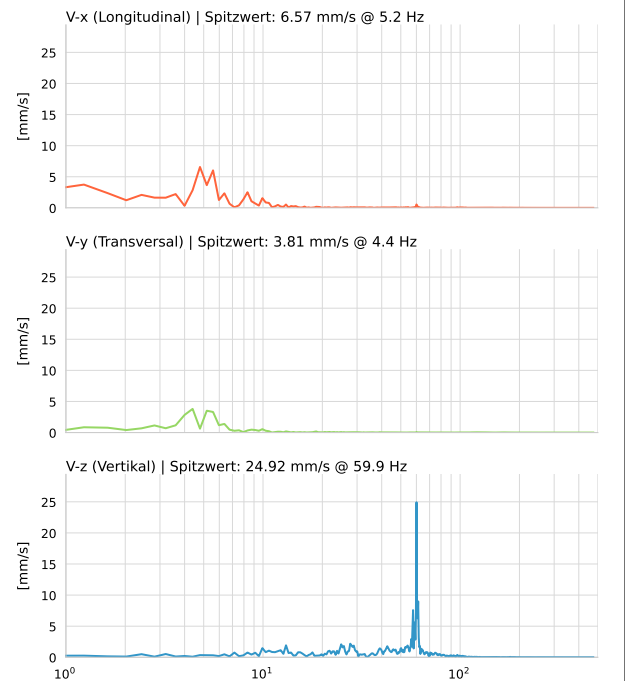


DATEI: 2492-PG8-19052026-003538\_raw.csv

Aufzeichnungsdauer: 20.26 s | Abtastrate: 1000 Hz

|          |                          |
|----------|--------------------------|
| Datum    | 19.05.2026               |
| Zeit     | 00:35:38                 |
| Event-ID | 2492-PG8-19052026-003538 |
| Status   | Kritisch                 |
| X        | 6.57 mm/s @ 5.2 Hz       |
| Y        | 3.81 mm/s @ 4.4 Hz       |
| Z        | 24.92 mm/s @ 59.9 Hz     |
| Vn       | 24.95 mm/s @ 59.9 Hz     |

## SPEKTRALANALYSE - KOMPONENTEN FFT



| Kanal | Spitzwert | Spektrum 25% | Spektrum 50% | Spektrum 75% |
|-------|-----------|--------------|--------------|--------------|
| X     | 5.2 Hz    | 3.6 Hz       | 5.6 Hz       | 18.2 Hz      |
| Y     | 4.4 Hz    | 4.4 Hz       | 5.6 Hz       | 19.4 Hz      |
| Z     | 59.9 Hz   | 39.1 Hz      | 57.7 Hz      | 61.3 Hz      |

## SPEKTRALANALYSE - FFT (DIN 4150-3)

