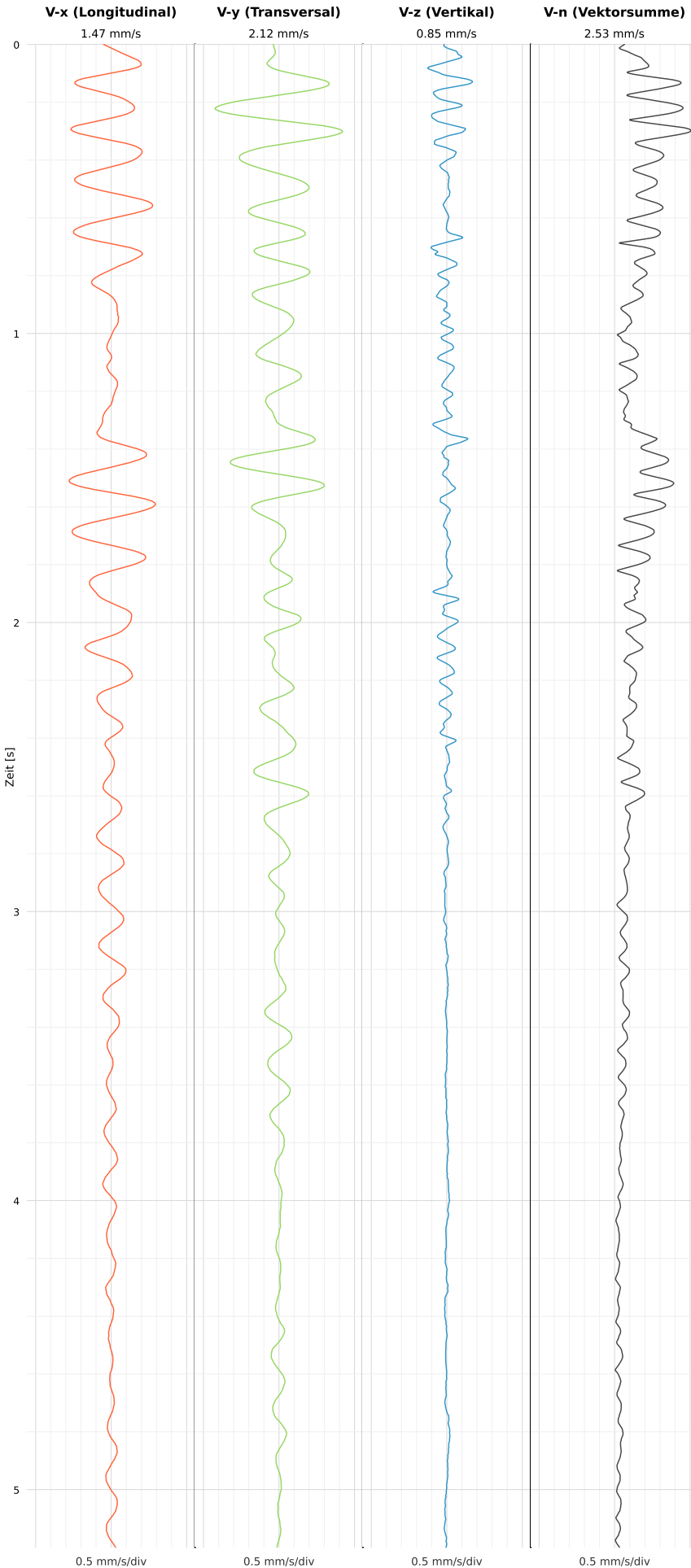


SCHWINGGESCHWINDIGKEIT

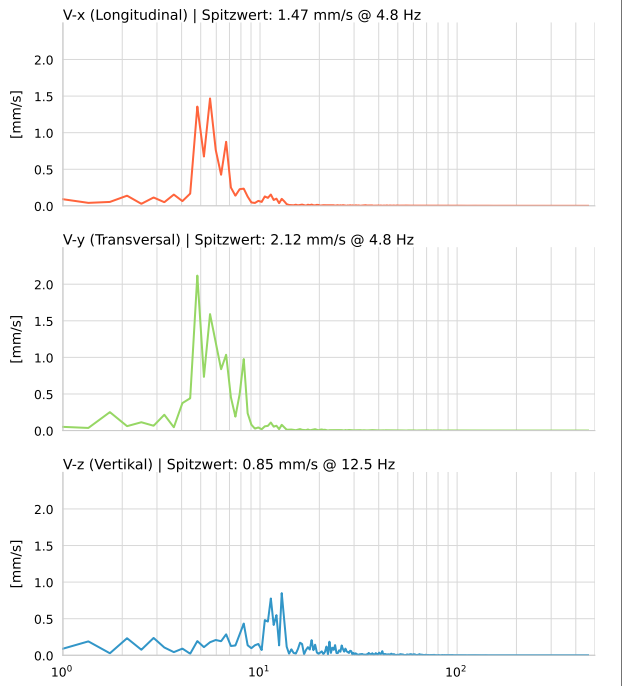


DATEI: 2492-PG8-19052026-104536_raw.csv

Aufzeichnungsdauer: 5.20 s | Abtastrate: 1000 Hz

| | |
|----------|--------------------------|
| Datum | 19.05.2026 |
| Zeit | 10:45:36 |
| Event-ID | 2492-PG8-19052026-104536 |
| Status | Ereignis |
| X | 1.47 mm/s @ 4.8 Hz |
| Y | 2.12 mm/s @ 4.8 Hz |
| Z | 0.85 mm/s @ 12.5 Hz |
| Vn | 2.53 mm/s @ 4.8 Hz |

SPEKTRALANALYSE - KOMPONENTEN FFT



| Kanal | Spitzwert | Spektrum 25% | Spektrum 50% | Spektrum 75% |
|-------|-----------|--------------|--------------|--------------|
| X | 4.8 Hz | 5.2 Hz | 6.0 Hz | 8.7 Hz |
| Y | 4.8 Hz | 4.8 Hz | 6.0 Hz | 7.5 Hz |
| Z | 12.5 Hz | 8.3 Hz | 12.1 Hz | 20.2 Hz |

SPEKTRALANALYSE - FFT (DIN 4150-3)

