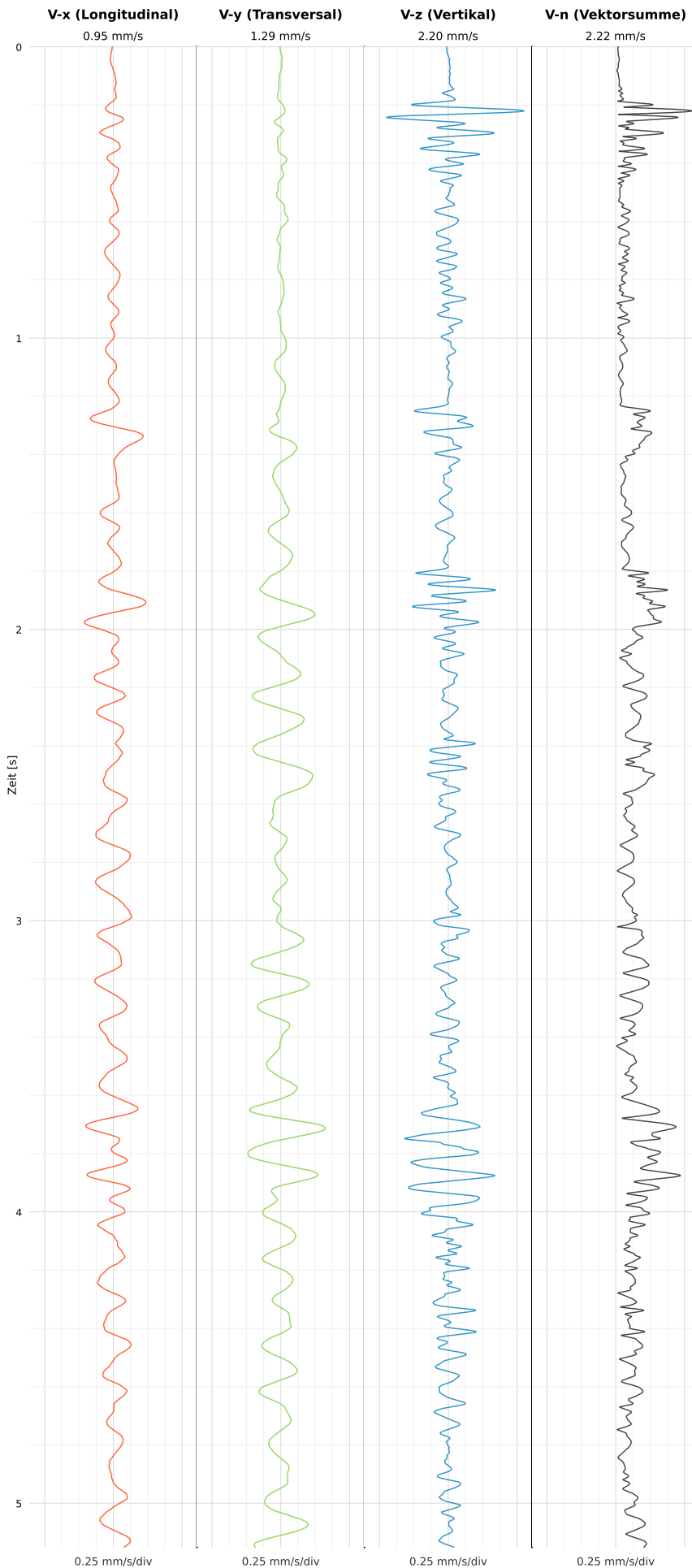


## SCHWINGGESCHWINDIGKEIT

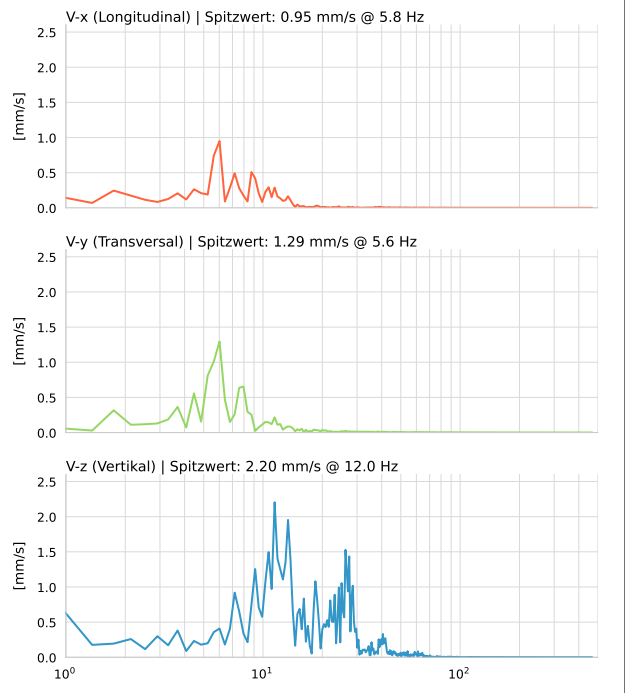


**DATEI: 2492-PG8-19052026-125703\_raw.csv**

Aufzeichnungsdauer: 5.15 s | Abtastrate: 1000 Hz

Datum	19.05.2026
Zeit	12:57:03
Event-ID	2492-PG8-19052026-125703
Status	Ereignis
X	0.95 mm/s @ 5.8 Hz
Y	1.29 mm/s @ 5.6 Hz
Z	2.20 mm/s @ 12.0 Hz
Vn	2.22 mm/s @ 12.0 Hz

## SPEKTRALANALYSE - KOMPONENTEN FFT



Kanal	Spitzwert	Spektrum 25%	Spektrum 50%	Spektrum 75%
X	5.8 Hz	5.6 Hz	7.6 Hz	11.8 Hz
Y	5.6 Hz	5.6 Hz	7.6 Hz	15.3 Hz
Z	12.0 Hz	11.5 Hz	18.4 Hz	27.0 Hz

## SPEKTRALANALYSE - FFT (DIN 4150-3)

