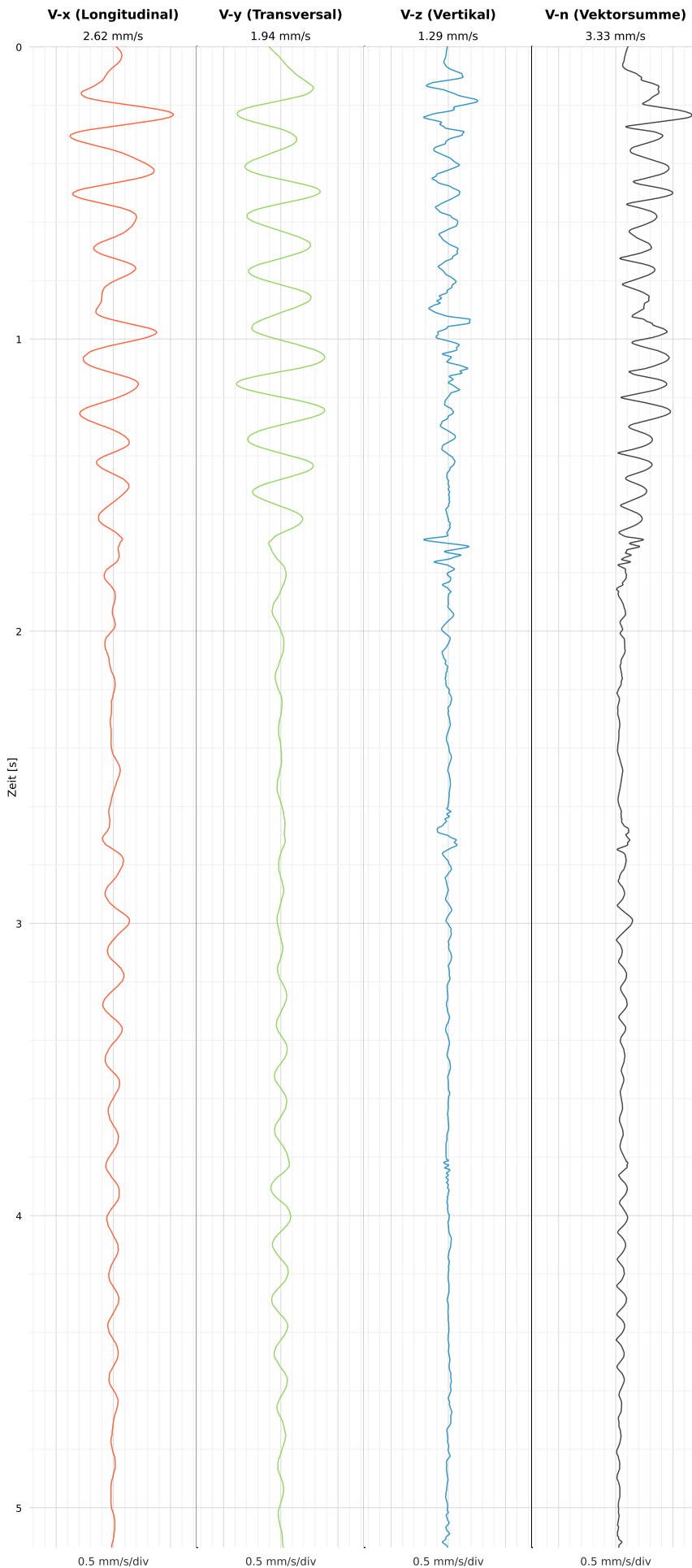


## SCHWINGGESCHWINDIGKEIT

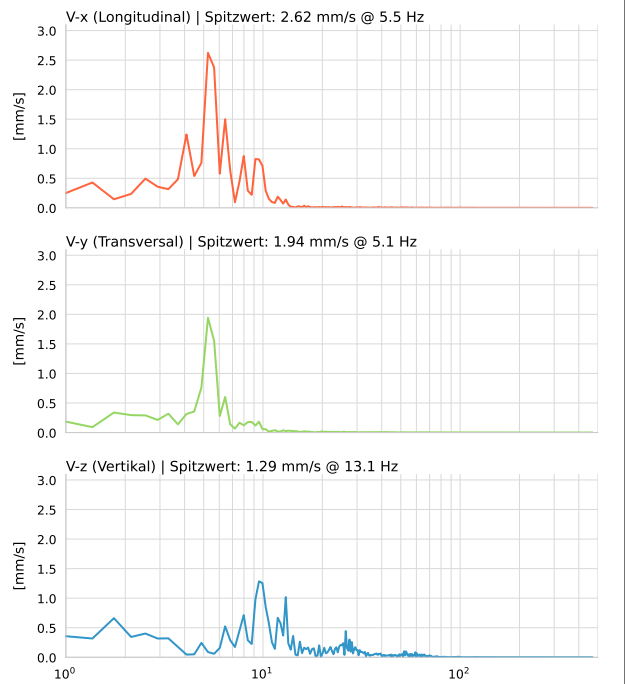


**DATEI: 2492-PG8-19052026-150441\_raw.csv**

Aufzeichnungsdauer: 5.14 s | Abtastrate: 1000 Hz

Datum	19.05.2026
Zeit	15:04:41
Event-ID	2492-PG8-19052026-150441
Status	Ereignis
X	2.62 mm/s @ 5.5 Hz
Y	1.94 mm/s @ 5.1 Hz
Z	1.29 mm/s @ 13.1 Hz
Vn	3.33 mm/s @ 5.5 Hz

## SPEKTRALANALYSE - KOMPONENTEN FFT



Kanal	Spitzwert	Spektrum 25%	Spektrum 50%	Spektrum 75%
X	5.5 Hz	4.9 Hz	5.6 Hz	9.2 Hz
Y	5.1 Hz	4.9 Hz	5.6 Hz	8.8 Hz
Z	13.1 Hz	8.8 Hz	12.3 Hz	26.3 Hz

## SPEKTRALANALYSE - FFT (DIN 4150-3)

