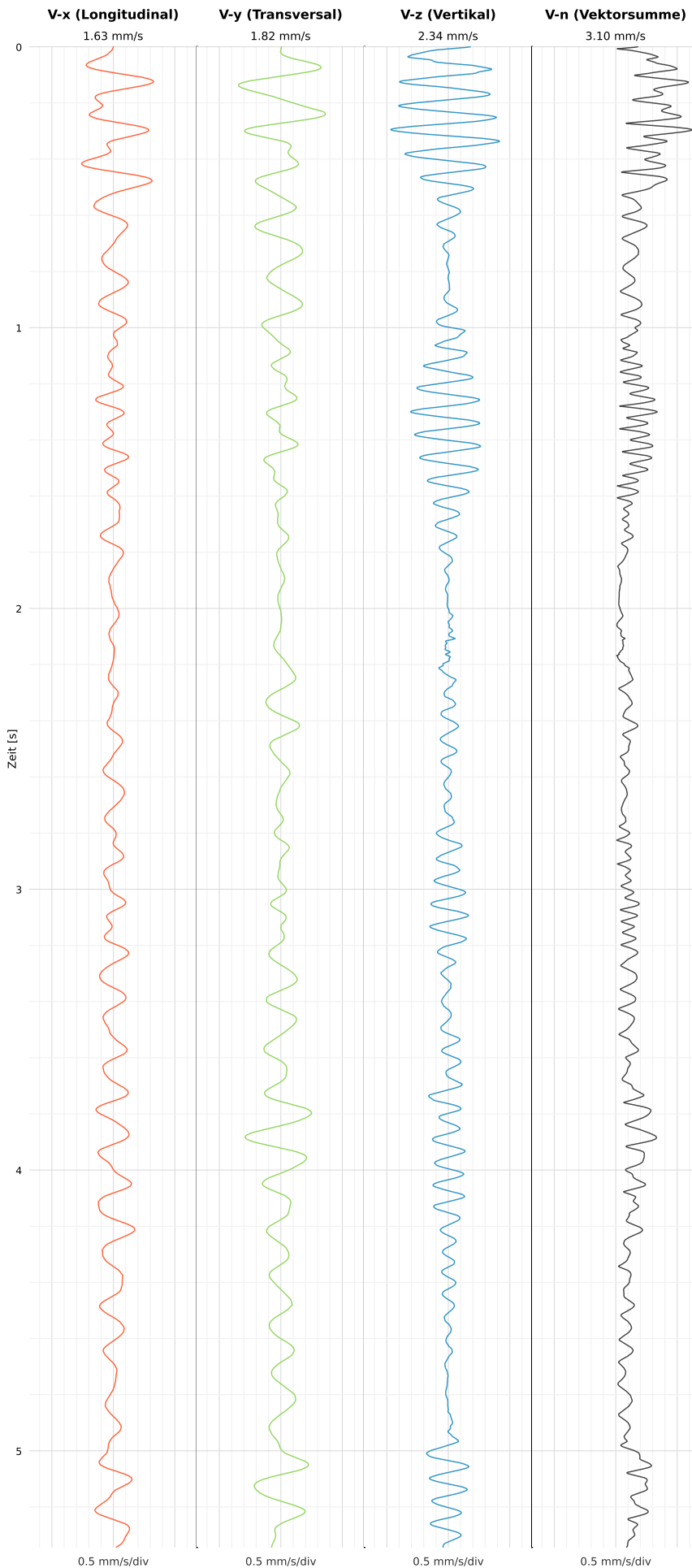


## SCHWINGGESCHWINDIGKEIT

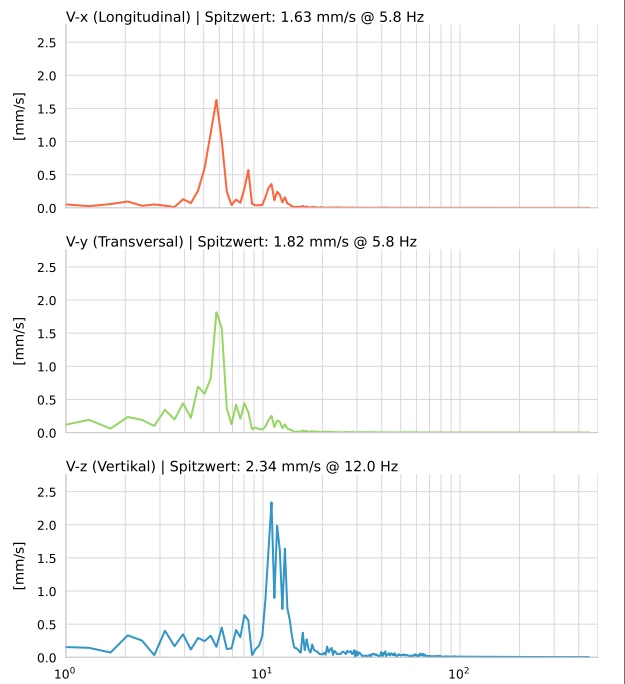


DATEI: 2492-RH6-15052026-143258\_raw.csv

Aufzeichnungsdauer: 5.34 s | Abtastrate: 1000 Hz

|          |                          |
|----------|--------------------------|
| Datum    | 15.05.2026               |
| Zeit     | 14:32:58                 |
| Event-ID | 2492-RH6-15052026-143258 |
| Status   | Ereignis                 |
| X        | 1.63 mm/s @ 5.8 Hz       |
| Y        | 1.82 mm/s @ 5.8 Hz       |
| Z        | 2.34 mm/s @ 12.0 Hz      |
| Vn       | 3.10 mm/s @ 12.0 Hz      |

## SPEKTRALANALYSE - KOMPONENTEN FFT



| Kanal | Spitzwert | Spektrum 25% | Spektrum 50% | Spektrum 75% |
|-------|-----------|--------------|--------------|--------------|
| X     | 5.8 Hz    | 5.4 Hz       | 6.2 Hz       | 10.3 Hz      |
| Y     | 5.8 Hz    | 5.1 Hz       | 6.2 Hz       | 8.4 Hz       |
| Z     | 12.0 Hz   | 10.7 Hz      | 12.5 Hz      | 31.6 Hz      |

## SPEKTRALANALYSE - FFT (DIN 4150-3)

