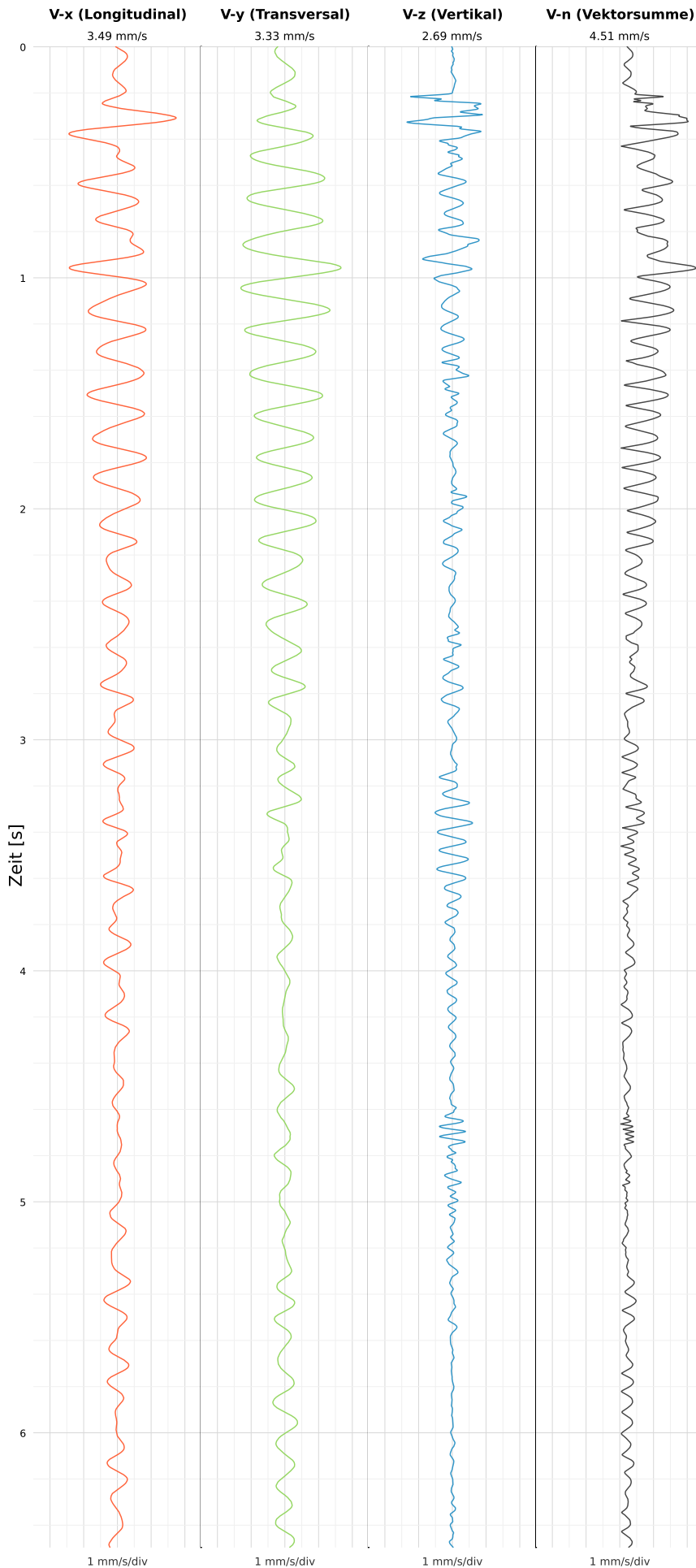


SCHWINGGESCHWINDIGKEIT



DATEI: 2492-PG14-16052026-102750_raw.csv

Aufzeichnungsdauer: 6.50 s | Abtastrate: 1000 Hz

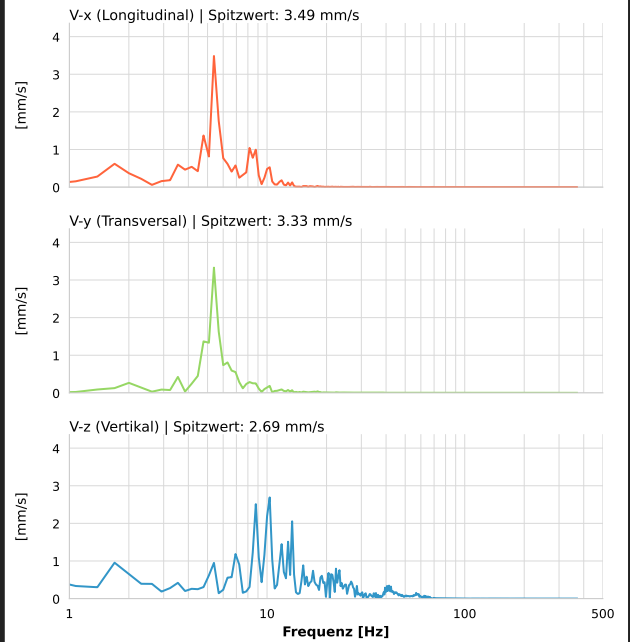
| | |
|-------------------------|---------------------------|
| Datum: | 16.05.2026 |
| Zeit: | 10:27:50 |
| Event-ID: | 2492-PG14-16052026-102750 |
| Kalibrier Datum: | 12.07.2025 |

Spitzwerte

| V-x (Longitudinal) | V-y (Transversal) | V-z (Vertikal) |
|--------------------|-------------------|------------------|
| 3.49 mm/s | 3.33 mm/s | 2.69 mm/s |
| 5.4 Hz | 5.4 Hz | 10.3 Hz |
| 69.72% von Limit | 66.57% von Limit | 52.96% von Limit |

V-n (Vektorsumme): 4.51 mm/s

SPEKTRALANALYSE - KOMPONENTEN FFT



| Kanal | Spitzwert | Spektrum 25% | Spektrum 50% | Spektrum 75% |
|-------|-----------|--------------|--------------|--------------|
| X | 3.49 mm/s | 4.8 Hz | 5.7 Hz | 8.5 Hz |
| Y | 3.33 mm/s | 5.1 Hz | 5.7 Hz | 7.9 Hz |
| Z | 2.69 mm/s | 9.1 Hz | 13.7 Hz | 25.1 Hz |

SPEKTRALANALYSE - FFT (DIN 4150-3)

