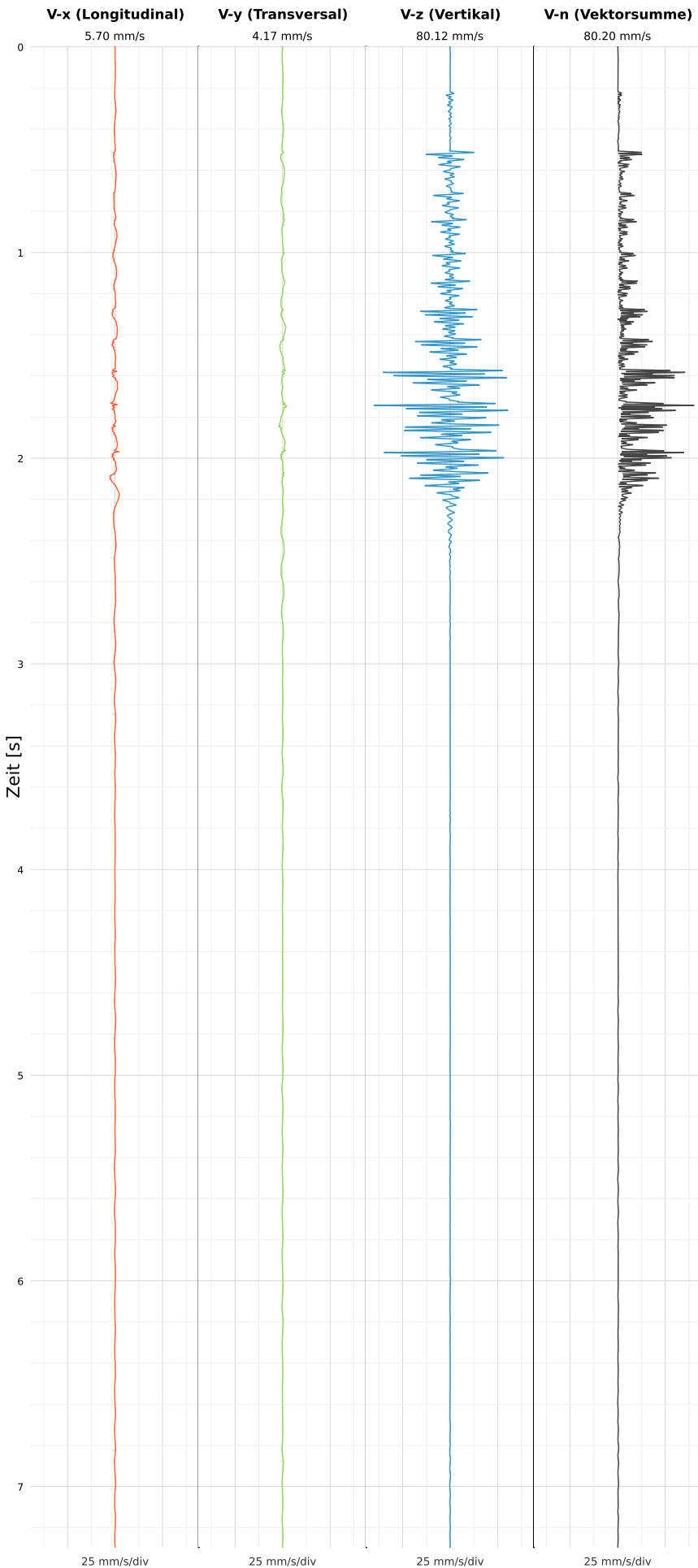


SCHWINGGESCHWINDIGKEIT



DATEI: 2492-PG14-17052026-173712_raw.csv

Aufzeichnungsdauer: 7.30 s | Abtastrate: 1000 Hz

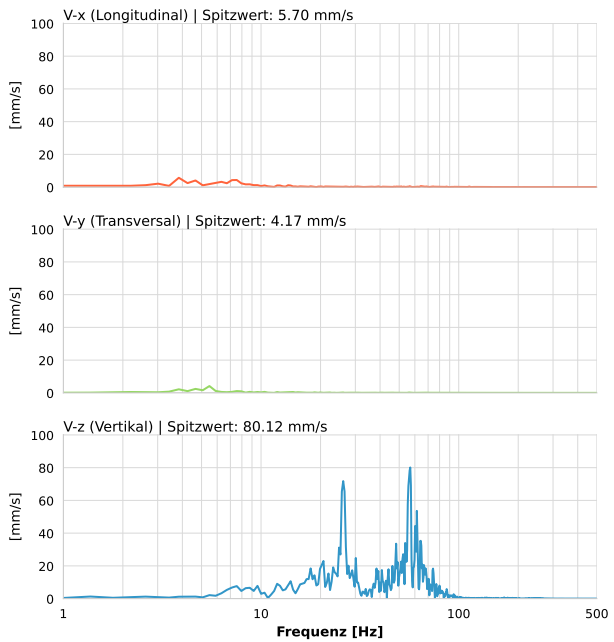
| | |
|------------------|---------------------------|
| Datum: | 17.05.2026 |
| Zeit: | 17:37:12 |
| Event-ID: | 2492-PG14-17052026-173712 |
| Kalibrier Datum: | 12.07.2025 |

Spitzwerte

| V-x (Longitudinal) | V-y (Transversal) | V-z (Vertikal) |
|--------------------|-------------------|-------------------|
| 5.70 mm/s | 4.17 mm/s | 80.12 mm/s |
| 3.8 Hz | 5.6 Hz | 56.6 Hz |
| 190.08% von Limit | 138.94% von Limit | 969.48% von Limit |

V-n (Vektorsumme): 80.20 mm/s

SPEKTRALANALYSE - KOMPONENTEN FFT



| Kanal | Spitzwert | Spektrum 25% | Spektrum 50% | Spektrum 75% |
|-------|------------|--------------|--------------|--------------|
| X | 5.70 mm/s | 6.3 Hz | 16.6 Hz | 68.8 Hz |
| Y | 4.17 mm/s | 5.5 Hz | 15.4 Hz | 72.9 Hz |
| Z | 80.12 mm/s | 27.7 Hz | 54.0 Hz | 61.4 Hz |

SPEKTRALANALYSE - FFT (DIN 4150-3)

