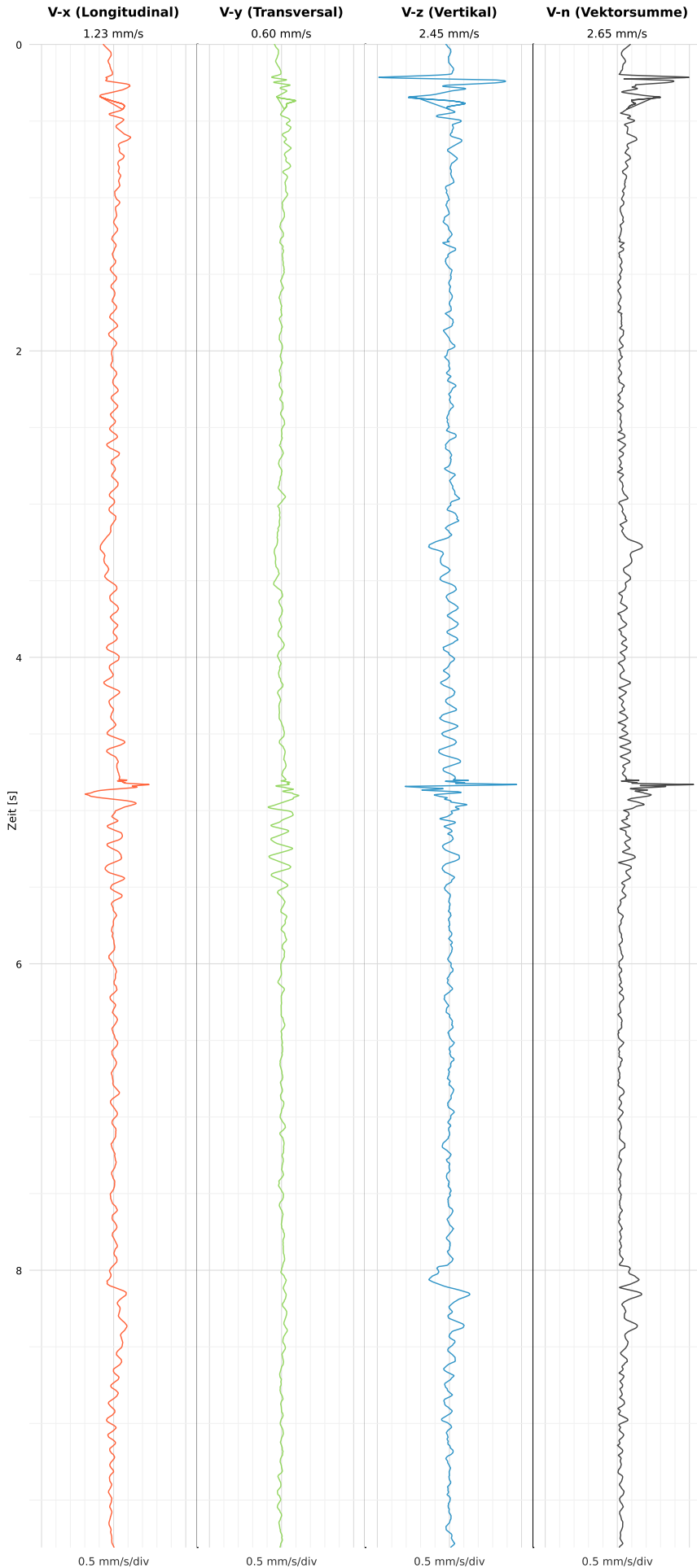


## SCHWINGGESCHWINDIGKEIT

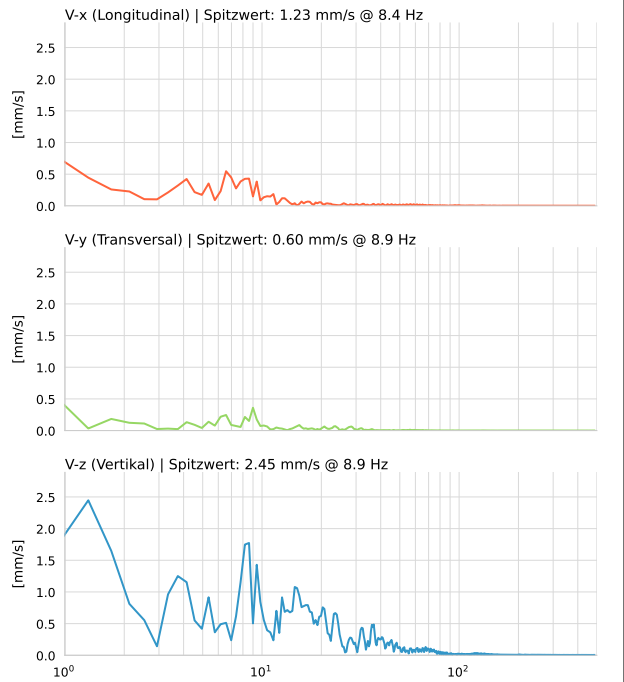


DATEI: 2493-HS-5-11052026-203322\_raw.csv

Aufzeichnungsdauer: 9.81 s | Abtastrate: 1000 Hz

Datum	11.05.2026
Zeit	22:33:22
Event-ID	2493-HS-5-11052026-203322
Status	Ereignis
X	1.23 mm/s @ 8.4 Hz
Y	0.60 mm/s @ 8.9 Hz
Z	2.45 mm/s @ 8.9 Hz
Vn	2.65 mm/s @ 9.0 Hz

## SPEKTRALANALYSE - KOMPONENTEN FFT



Kanal	Spitzwert	Spektrum 25%	Spektrum 50%	Spektrum 75%
X	8.4 Hz	3.3 Hz	8.2 Hz	36.9 Hz
Y	8.9 Hz	2.5 Hz	9.0 Hz	26.4 Hz
Z	8.9 Hz	8.2 Hz	17.9 Hz	40.1 Hz

## SPEKTRALANALYSE - FFT (DIN 4150-3)

