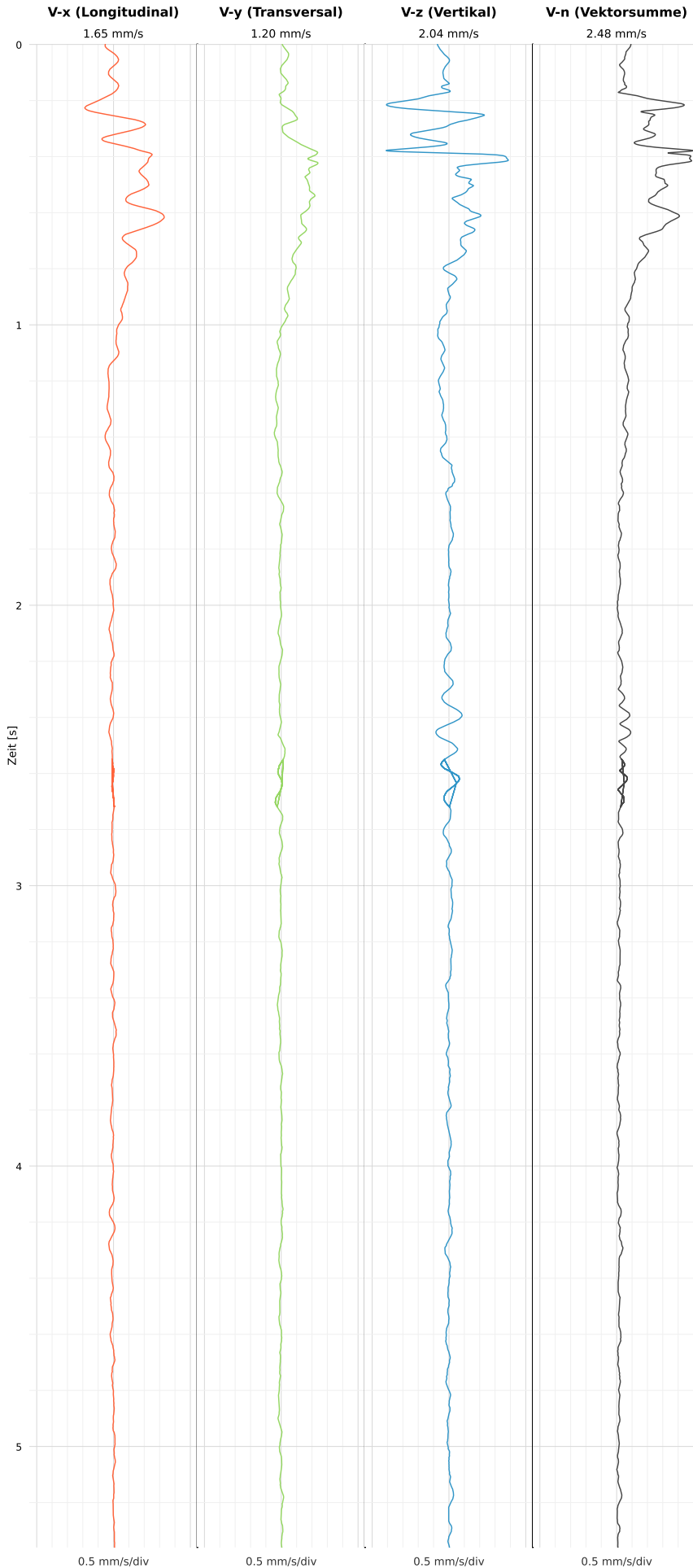


SCHWINGGESCHWINDIGKEIT

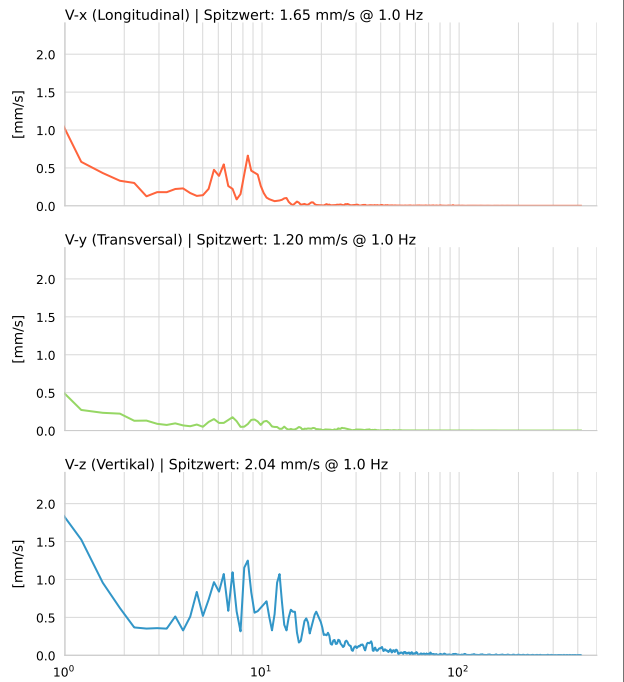


DATEI: 2493-HS-5-11052026-211624_raw.csv

Aufzeichnungsdauer: 5.36 s | Abtastrate: 1000 Hz

| | |
|----------|---------------------------|
| Datum | 11.05.2026 |
| Zeit | 23:16:24 |
| Event-ID | 2493-HS-5-11052026-211624 |
| Status | Ereignis |
| X | 1.65 mm/s @ 1.0 Hz |
| Y | 1.20 mm/s @ 1.0 Hz |
| Z | 2.04 mm/s @ 1.0 Hz |
| Vn | 2.48 mm/s @ 8.6 Hz |

SPEKTRALANALYSE - KOMPONENTEN FFT



| Kanal | Spitzwert | Spektrum 25% | Spektrum 50% | Spektrum 75% |
|-------|-----------|--------------|--------------|--------------|
| X | 1.0 Hz | 0.9 Hz | 5.7 Hz | 9.5 Hz |
| Y | 1.0 Hz | 0.5 Hz | 4.3 Hz | 11.6 Hz |
| Z | 1.0 Hz | 6.1 Hz | 12.3 Hz | 24.4 Hz |

SPEKTRALANALYSE - FFT (DIN 4150-3)

