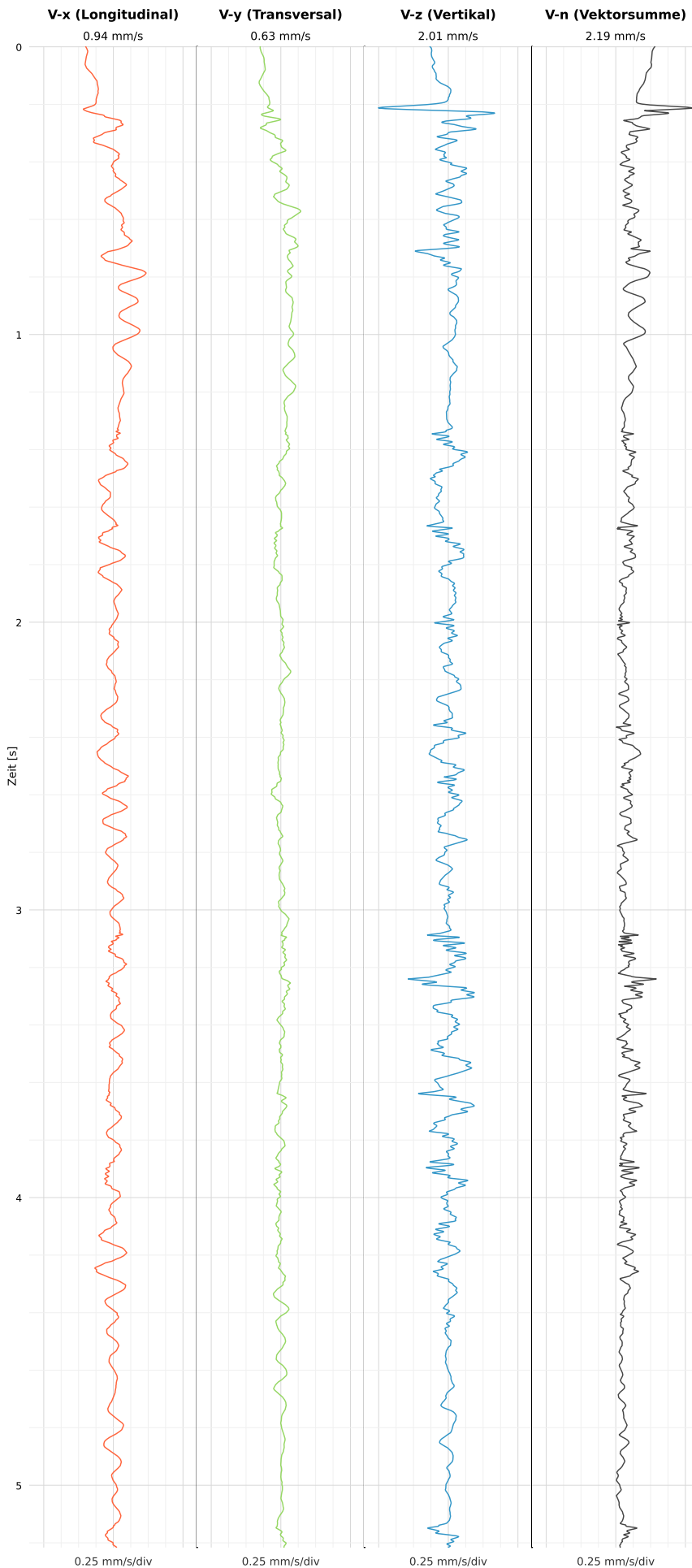


## SCHWINGGESCHWINDIGKEIT

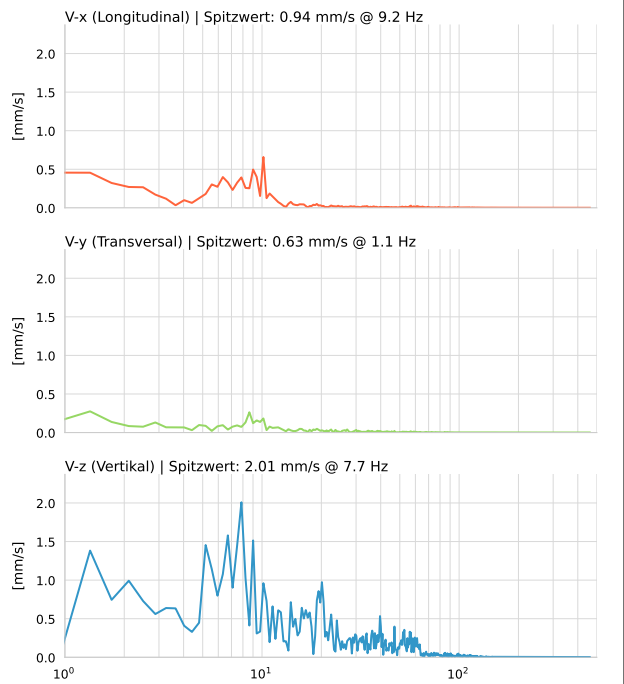


**DATEI: 2493-HS-5-11052026-212953\_raw.csv**

Aufzeichnungsdauer: 5.22 s | Abtastrate: 1000 Hz

|          |                           |
|----------|---------------------------|
| Datum    | 11.05.2026                |
| Zeit     | 23:29:53                  |
| Event-ID | 2493-HS-5-11052026-212953 |
| Status   | Ereignis                  |
| X        | 0.94 mm/s @ 9.2 Hz        |
| Y        | 0.63 mm/s @ 1.1 Hz        |
| Z        | 2.01 mm/s @ 7.7 Hz        |
| Vn       | 2.19 mm/s @ 7.7 Hz        |

## SPEKTRALANALYSE - KOMPONENTEN FFT



| Kanal | Spitzwert | Spektrum 25% | Spektrum 50% | Spektrum 75% |
|-------|-----------|--------------|--------------|--------------|
| X     | 9.2 Hz    | 3.3 Hz       | 9.0 Hz       | 28.9 Hz      |
| Y     | 1.1 Hz    | 3.3 Hz       | 10.5 Hz      | 42.4 Hz      |
| Z     | 7.7 Hz    | 7.5 Hz       | 19.0 Hz      | 42.0 Hz      |

## SPEKTRALANALYSE - FFT (DIN 4150-3)

