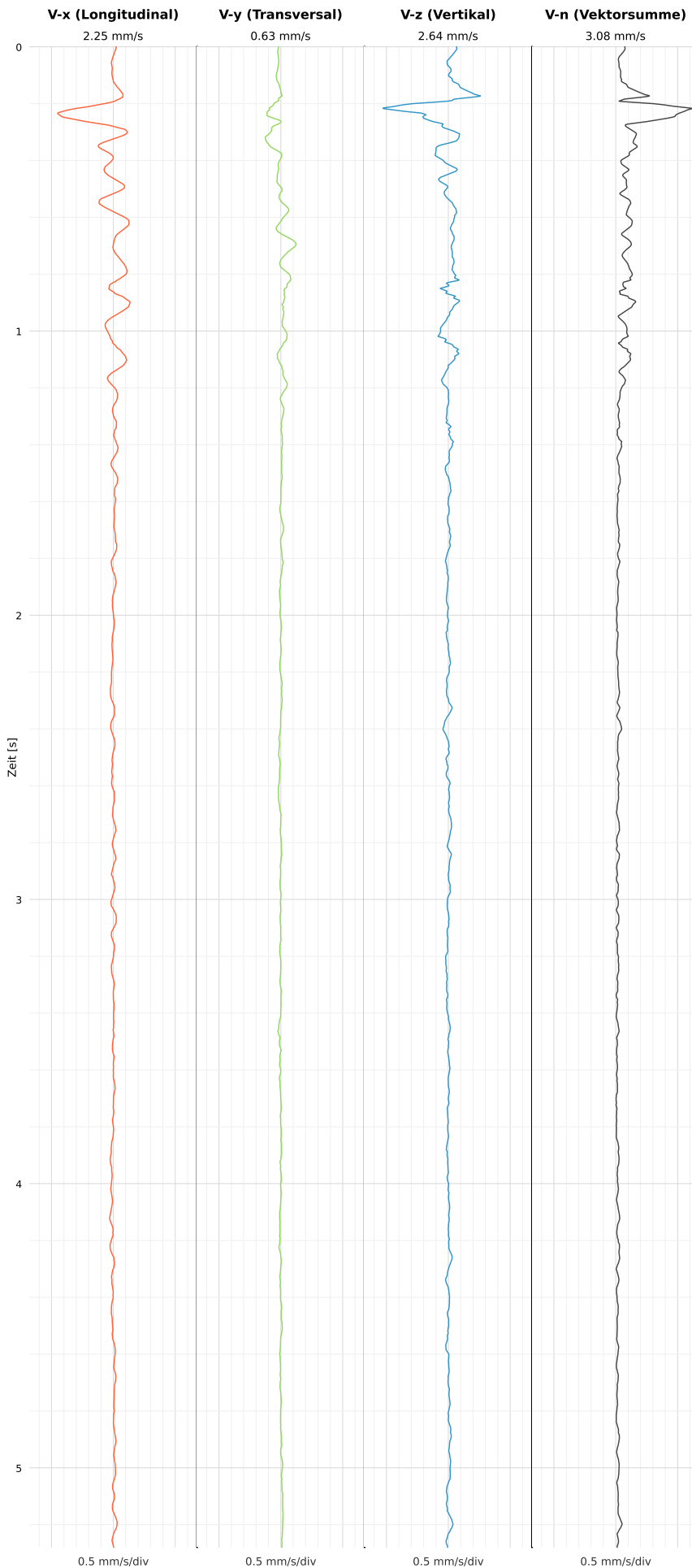


## SCHWINGGESCHWINDIGKEIT

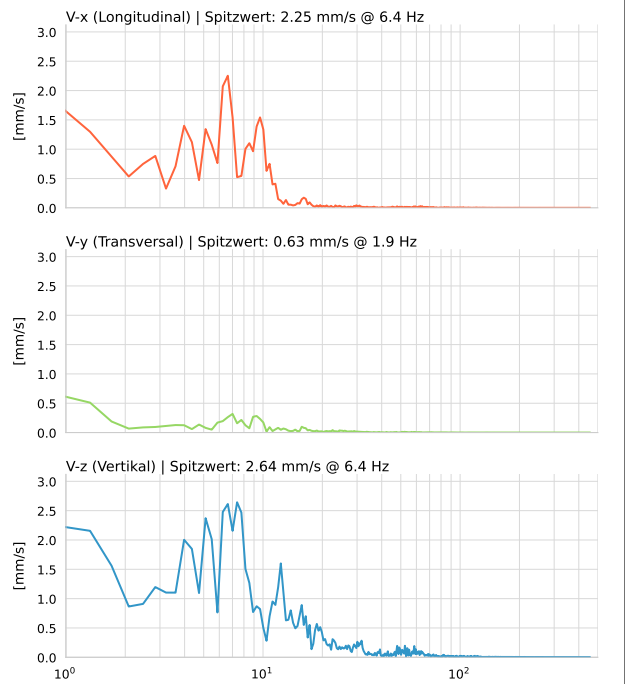


**DATEI: 2493-HS-5-11052026-213009\_raw.csv**

Aufzeichnungsdauer: 5.28 s | Abtastrate: 1000 Hz

Datum	11.05.2026
Zeit	23:30:09
Event-ID	2493-HS-5-11052026-213009
Status	Ereignis
X	2.25 mm/s @ 6.4 Hz
Y	0.63 mm/s @ 1.9 Hz
Z	2.64 mm/s @ 6.4 Hz
Vn	3.08 mm/s @ 6.4 Hz

## SPEKTRALANALYSE - KOMPONENTEN FFT



Kanal	Spitzwert	Spektrum 25%	Spektrum 50%	Spektrum 75%
X	6.4 Hz	3.6 Hz	6.6 Hz	9.7 Hz
Y	1.9 Hz	1.7 Hz	7.8 Hz	16.5 Hz
Z	6.4 Hz	5.1 Hz	8.9 Hz	19.9 Hz

## SPEKTRALANALYSE - FFT (DIN 4150-3)

