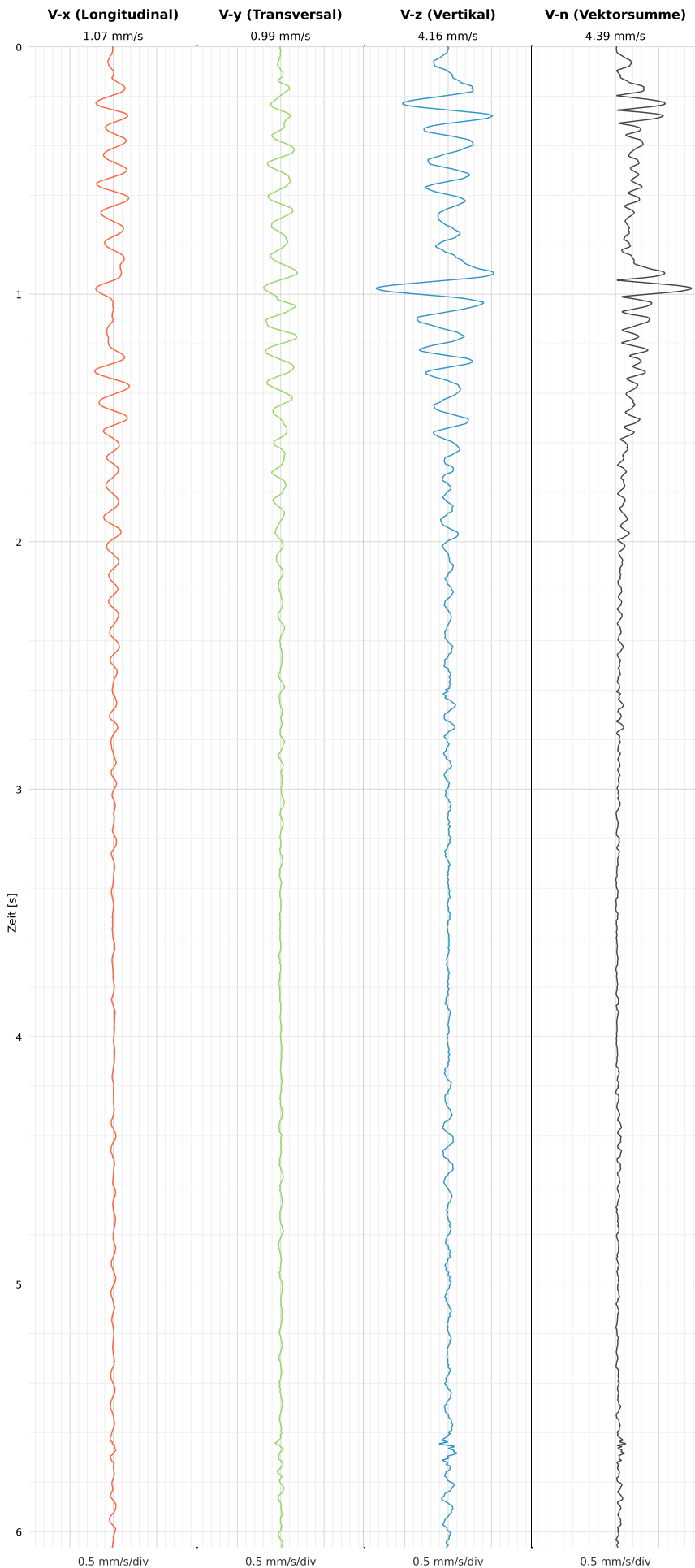


## SCHWINGGESCHWINDIGKEIT

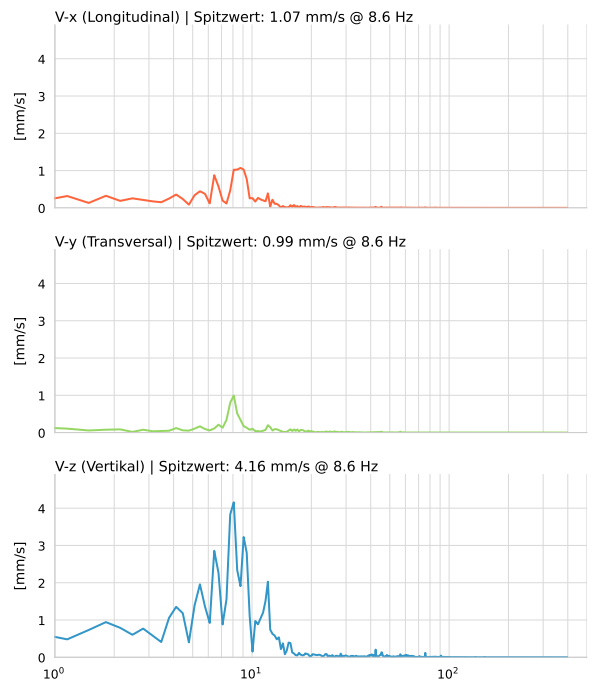


**DATEI: 2493-HS-5-12052026-064028\_raw.csv**

Aufzeichnungsdauer: 6.06 s | Abtastrate: 1000 Hz

Datum	12.05.2026
Zeit	08:40:28
Event-ID	2493-HS-5-12052026-064028
Status	Hinweis
X	1.07 mm/s @ 8.6 Hz
Y	0.99 mm/s @ 8.6 Hz
Z	4.16 mm/s @ 8.6 Hz
Vn	4.39 mm/s @ 8.6 Hz

## SPEKTRALANALYSE - KOMPONENTEN FFT



Kanal	Spitzwert	Spektrum 25%	Spektrum 50%	Spektrum 75%
X	8.6 Hz	5.4 Hz	8.4 Hz	10.1 Hz
Y	8.6 Hz	7.4 Hz	8.4 Hz	14.7 Hz
Z	8.6 Hz	6.1 Hz	8.1 Hz	11.7 Hz

## SPEKTRALANALYSE - FFT (DIN 4150-3)

