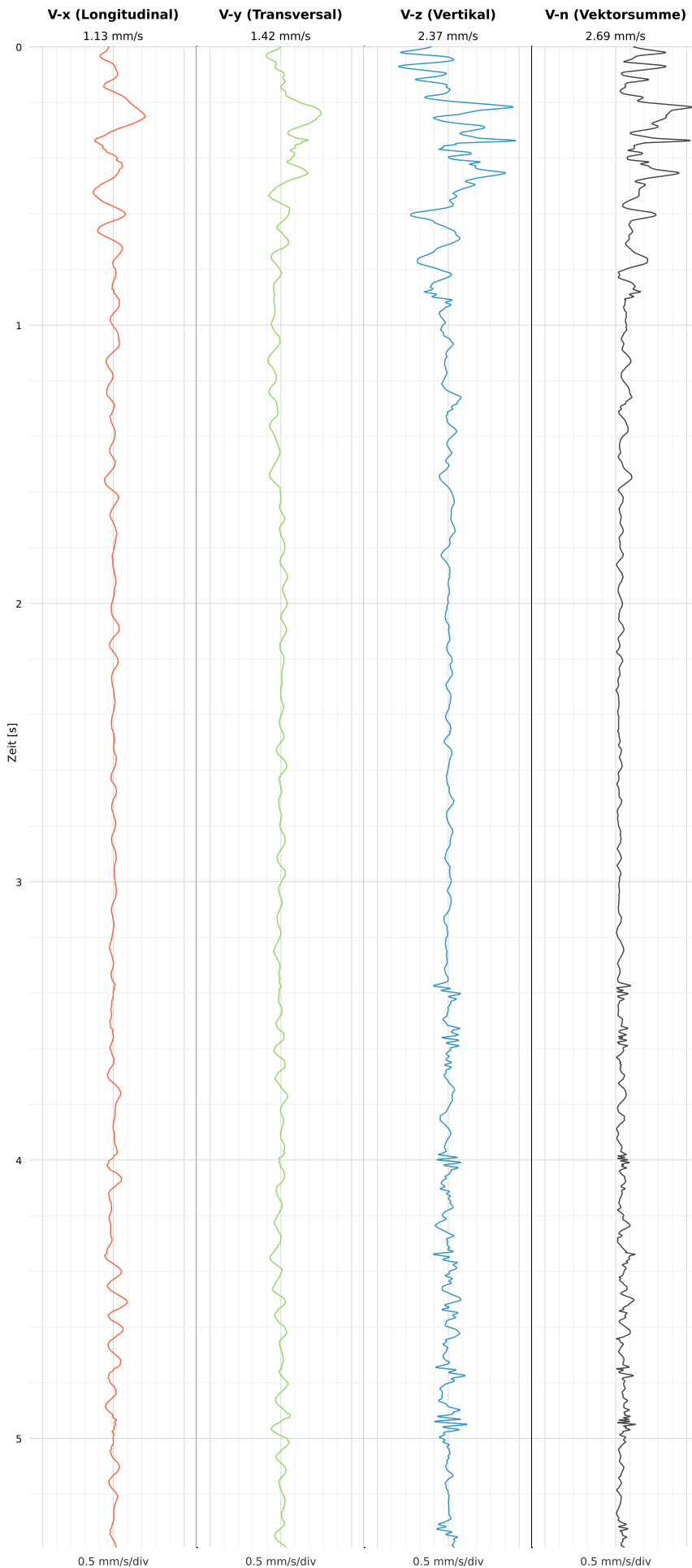


## SCHWINGGESCHWINDIGKEIT

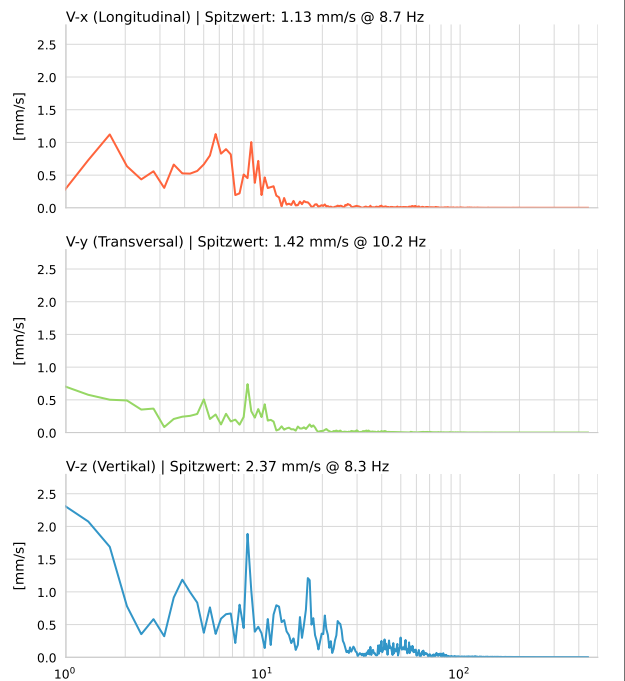


**DATEI: 2493-HS-5-12052026-135517\_raw.csv**

Aufzeichnungsdauer: 5.39 s | Abtastrate: 1000 Hz

Datum	12.05.2026
Zeit	15:55:17
Event-ID	2493-HS-5-12052026-135517
Status	Ereignis
X	1.13 mm/s @ 8.7 Hz
Y	1.42 mm/s @ 10.2 Hz
Z	2.37 mm/s @ 8.3 Hz
Vn	2.69 mm/s @ 8.3 Hz

## SPEKTRALANALYSE - KOMPONENTEN FFT



Kanal	Spitzwert	Spektrum 25%	Spektrum 50%	Spektrum 75%
X	8.7 Hz	3.9 Hz	6.9 Hz	11.3 Hz
Y	10.2 Hz	1.7 Hz	6.5 Hz	12.1 Hz
Z	8.3 Hz	5.7 Hz	15.8 Hz	39.1 Hz

## SPEKTRALANALYSE - FFT (DIN 4150-3)

