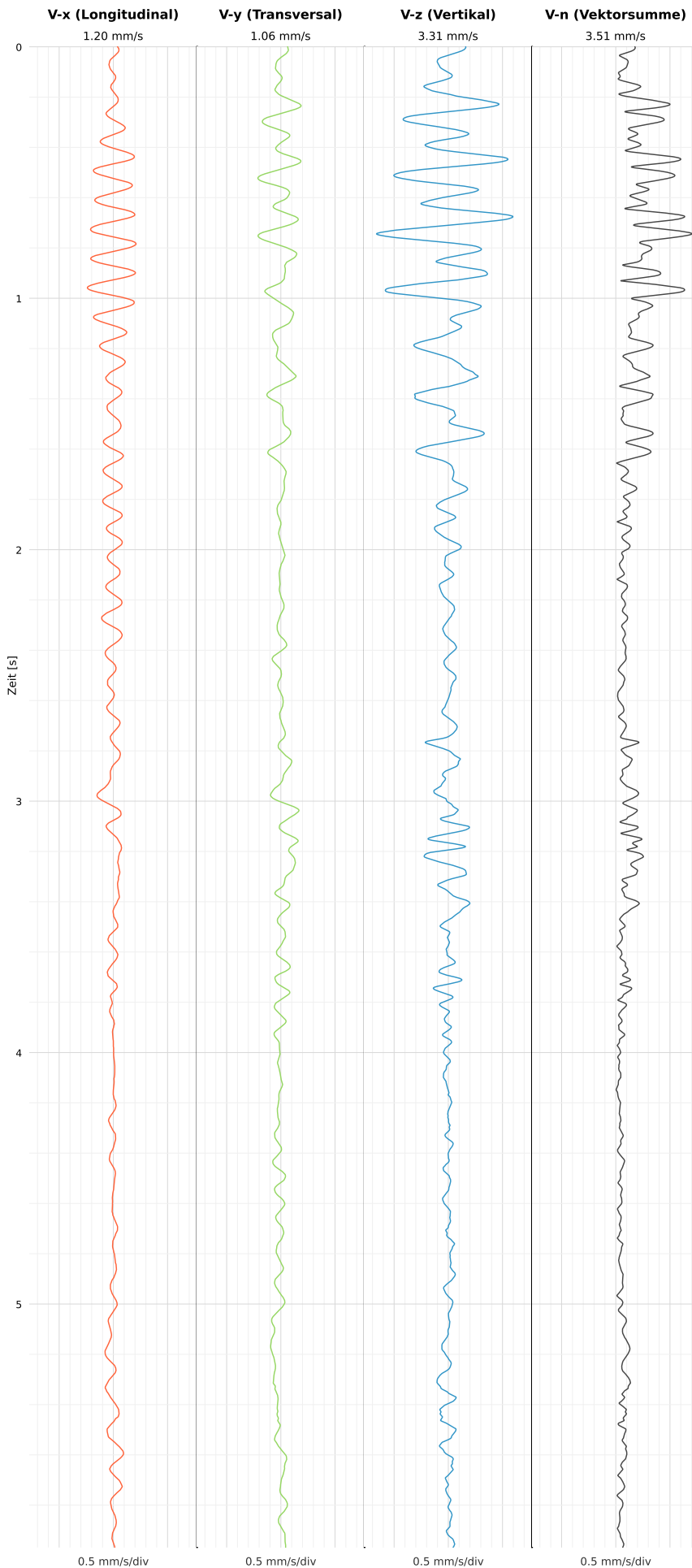


## SCHWINGGESCHWINDIGKEIT

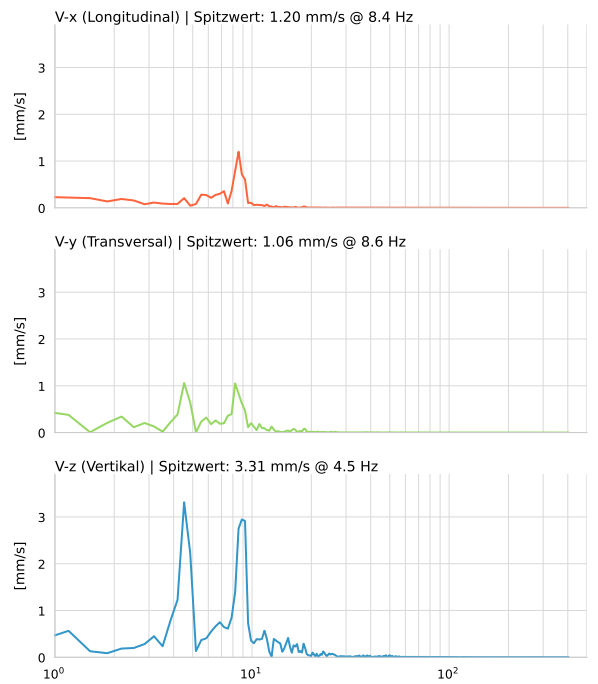


**DATEI: 2493-HS-5-12052026-135624\_raw.csv**

Aufzeichnungsdauer: 5.97 s | Abtastrate: 1000 Hz

Datum	12.05.2026
Zeit	15:56:24
Event-ID	2493-HS-5-12052026-135624
Status	Hinweis
X	1.20 mm/s @ 8.4 Hz
Y	1.06 mm/s @ 8.6 Hz
Z	3.31 mm/s @ 4.5 Hz
Vn	3.51 mm/s @ 4.5 Hz

## SPEKTRALANALYSE - KOMPONENTEN FFT



Kanal	Spitzwert	Spektrum 25%	Spektrum 50%	Spektrum 75%
X	8.4 Hz	5.5 Hz	8.2 Hz	8.9 Hz
Y	8.6 Hz	4.2 Hz	7.5 Hz	9.2 Hz
Z	4.5 Hz	4.9 Hz	8.5 Hz	11.9 Hz

## SPEKTRALANALYSE - FFT (DIN 4150-3)

