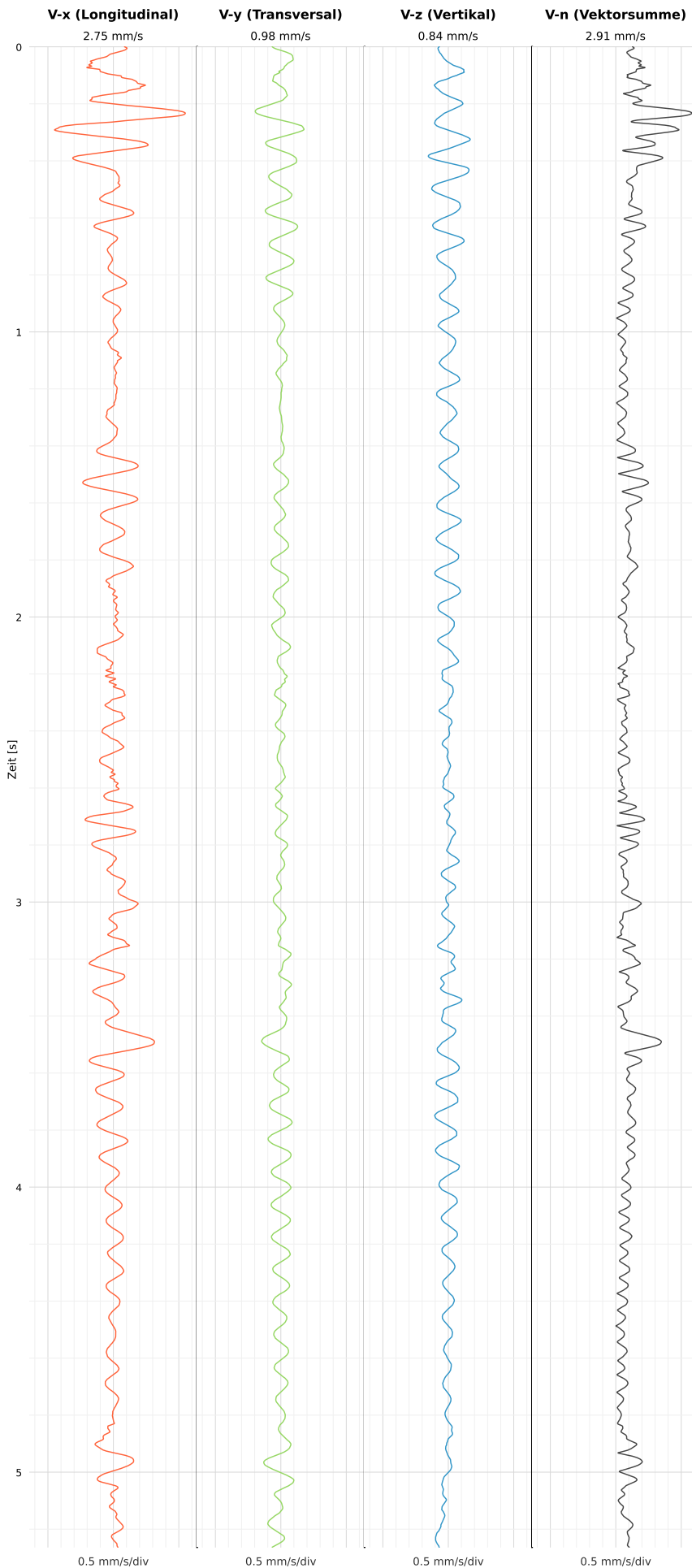


## SCHWINGGESCHWINDIGKEIT

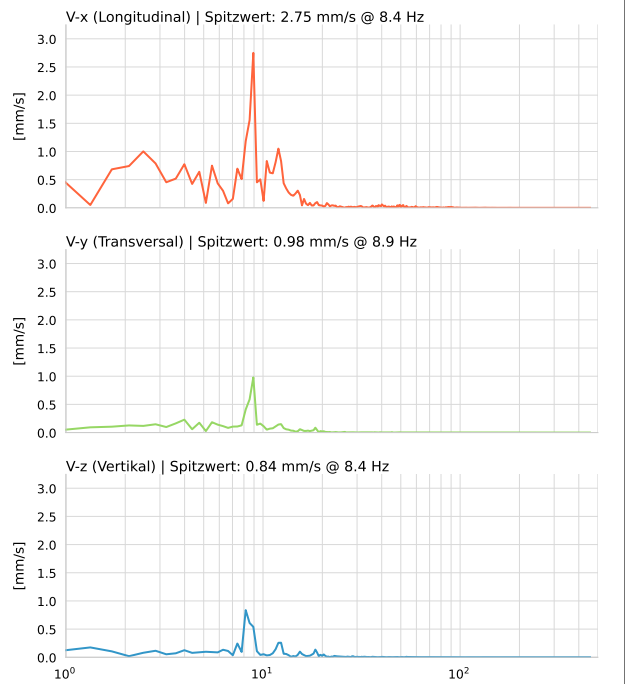


**DATEI: 2493-HS-5-12052026-222435\_raw.csv**

Aufzeichnungsdauer: 5.26 s | Abtastrate: 1000 Hz

|          |                           |
|----------|---------------------------|
| Datum    | 13.05.2026                |
| Zeit     | 00:24:35                  |
| Event-ID | 2493-HS-5-12052026-222435 |
| Status   | Ereignis                  |
| X        | 2.75 mm/s @ 8.4 Hz        |
| Y        | 0.98 mm/s @ 8.9 Hz        |
| Z        | 0.84 mm/s @ 8.4 Hz        |
| Vn       | 2.91 mm/s @ 8.4 Hz        |

## SPEKTRALANALYSE - KOMPONENTEN FFT



| Kanal | Spitzwert | Spektrum 25% | Spektrum 50% | Spektrum 75% |
|-------|-----------|--------------|--------------|--------------|
| X     | 8.4 Hz    | 5.5 Hz       | 8.9 Hz       | 12.3 Hz      |
| Y     | 8.9 Hz    | 5.5 Hz       | 8.5 Hz       | 11.6 Hz      |
| Z     | 8.4 Hz    | 6.3 Hz       | 8.5 Hz       | 13.1 Hz      |

## SPEKTRALANALYSE - FFT (DIN 4150-3)

