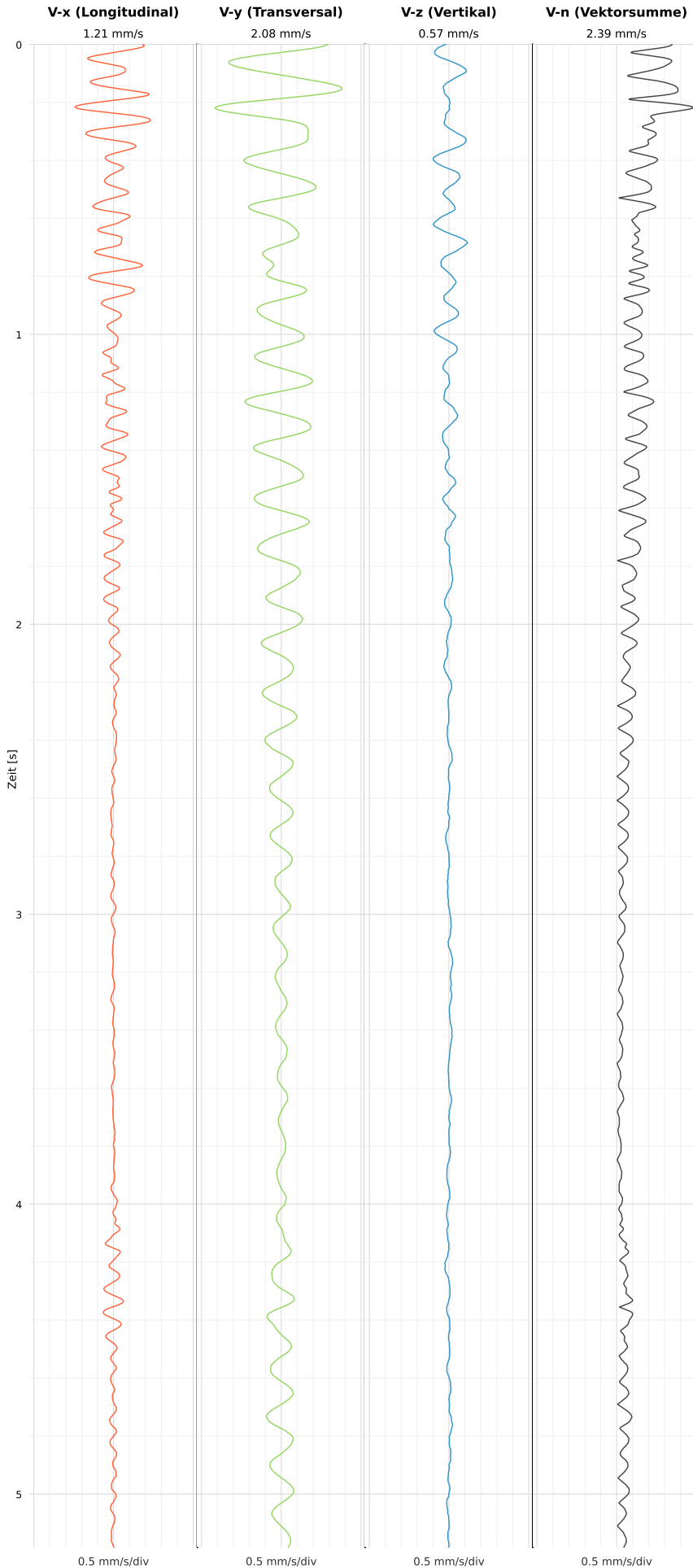


## SCHWINGGESCHWINDIGKEIT

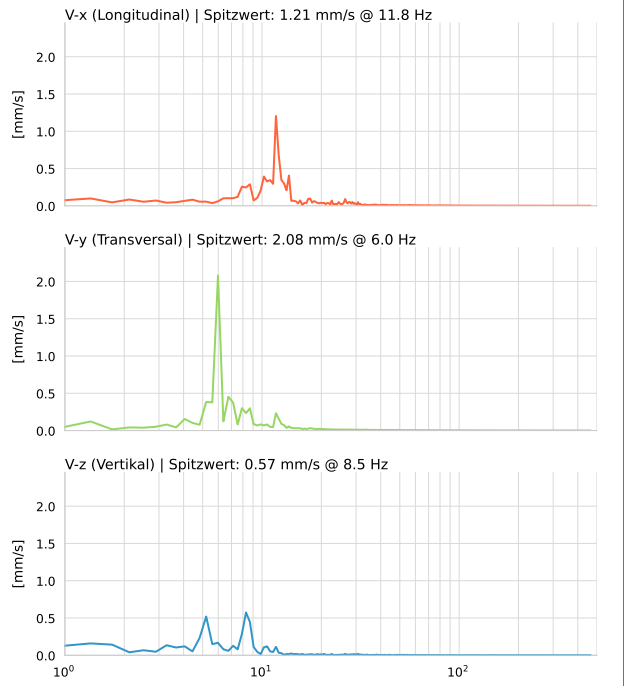


DATEI: 2493-HS-5-13052026-163837\_raw.csv

Aufzeichnungsdauer: 5.18 s | Abtastrate: 1000 Hz

|          |                           |
|----------|---------------------------|
| Datum    | 13.05.2026                |
| Zeit     | 18:38:37                  |
| Event-ID | 2493-HS-5-13052026-163837 |
| Status   | Ereignis                  |
| X        | 1.21 mm/s @ 11.8 Hz       |
| Y        | 2.08 mm/s @ 6.0 Hz        |
| Z        | 0.57 mm/s @ 8.5 Hz        |
| Vn       | 2.39 mm/s @ 6.0 Hz        |

## SPEKTRALANALYSE - KOMPONENTEN FFT



| Kanal | Spitzwert | Spektrum 25% | Spektrum 50% | Spektrum 75% |
|-------|-----------|--------------|--------------|--------------|
| X     | 11.8 Hz   | 10.6 Hz      | 12.5 Hz      | 33.8 Hz      |
| Y     | 6.0 Hz    | 6.0 Hz       | 7.9 Hz       | 28.7 Hz      |
| Z     | 8.5 Hz    | 5.2 Hz       | 8.3 Hz       | 11.0 Hz      |

## SPEKTRALANALYSE - FFT (DIN 4150-3)

