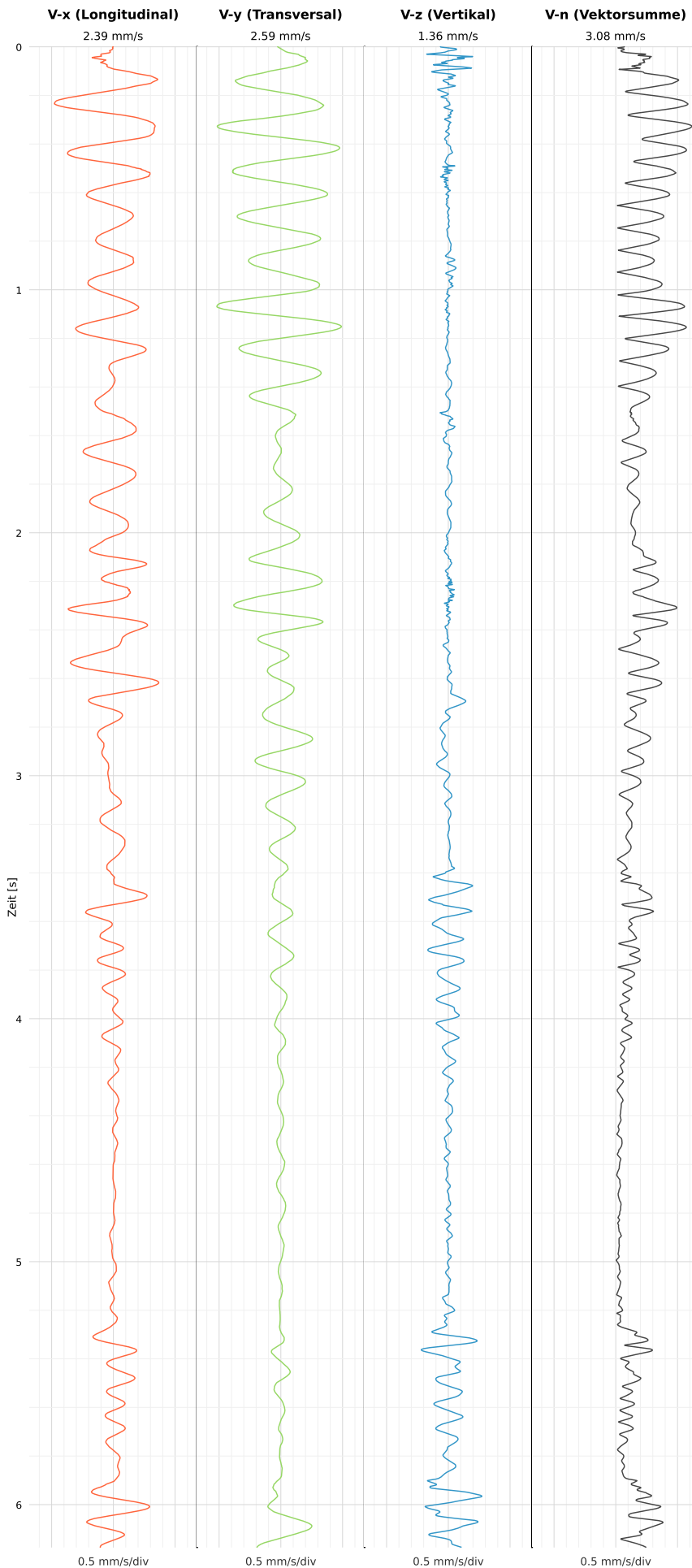


## SCHWINGGESCHWINDIGKEIT

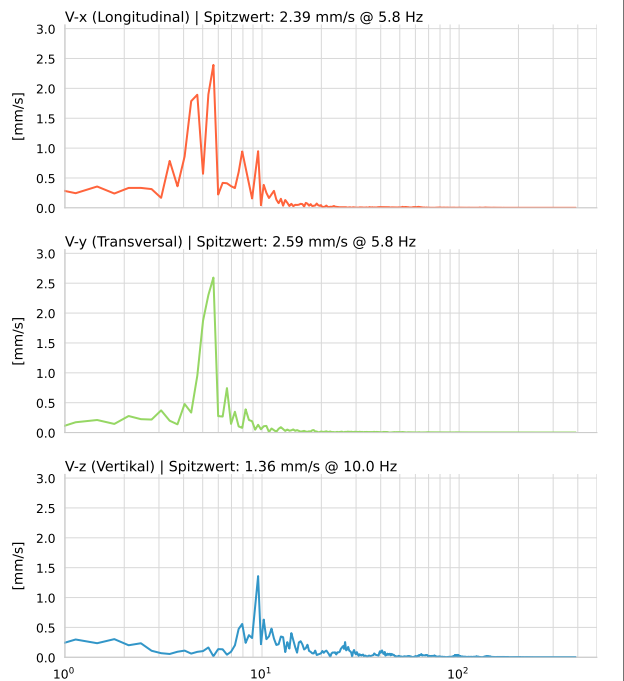


DATEI: 2493-HS5-18052026-142620\_raw.csv

Aufzeichnungsdauer: 6.18 s | Abtastrate: 1000 Hz

Datum	18.05.2026
Zeit	14:26:20
Event-ID	2493-HS5-18052026-142620
Status	Ereignis
X	2.39 mm/s @ 5.8 Hz
Y	2.59 mm/s @ 5.8 Hz
Z	1.36 mm/s @ 10.0 Hz
Vn	3.08 mm/s @ 5.8 Hz

## SPEKTRALANALYSE - KOMPONENTEN FFT



Kanal	Spitzwert	Spektrum 25%	Spektrum 50%	Spektrum 75%
X	5.8 Hz	4.4 Hz	5.7 Hz	9.6 Hz
Y	5.8 Hz	5.0 Hz	5.7 Hz	8.3 Hz
Z	10.0 Hz	9.6 Hz	15.7 Hz	41.0 Hz

## SPEKTRALANALYSE - FFT (DIN 4150-3)

