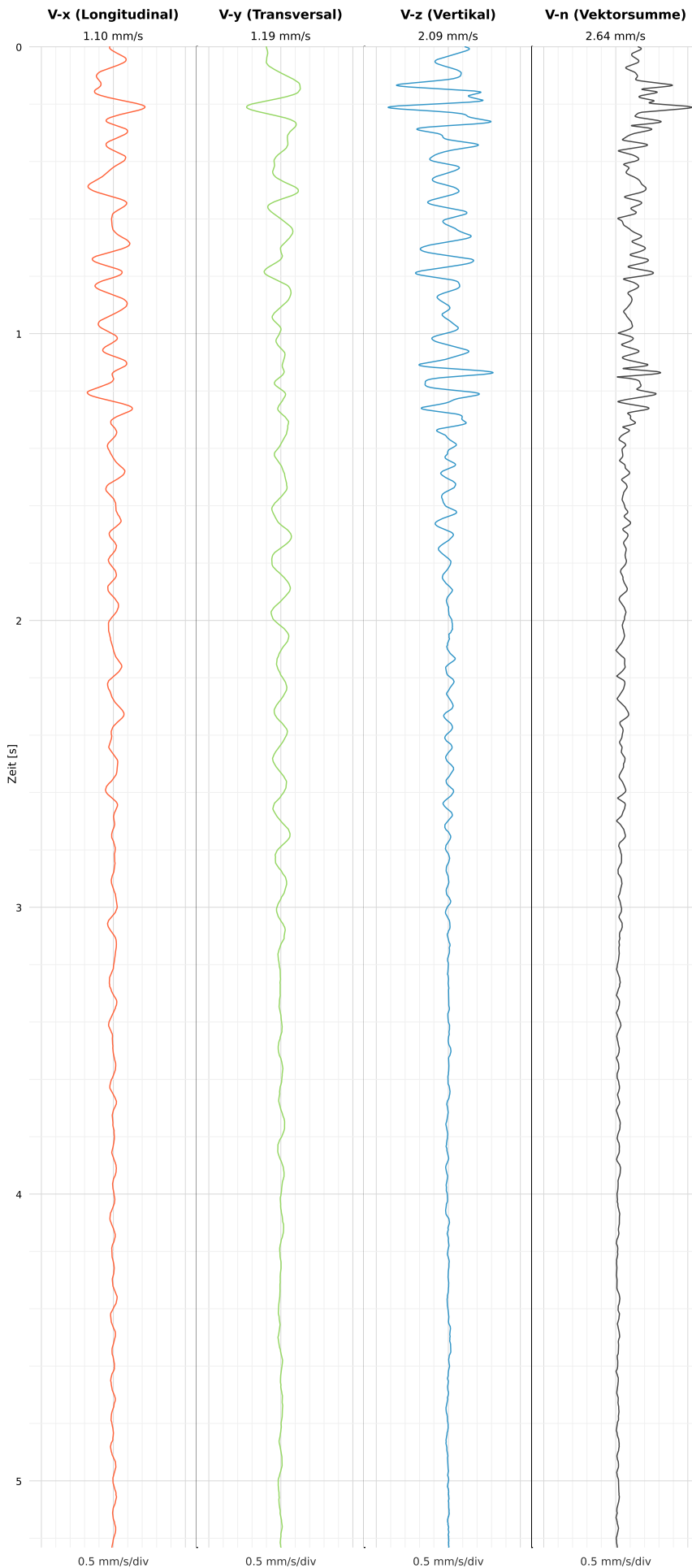


SCHWINGGESCHWINDIGKEIT

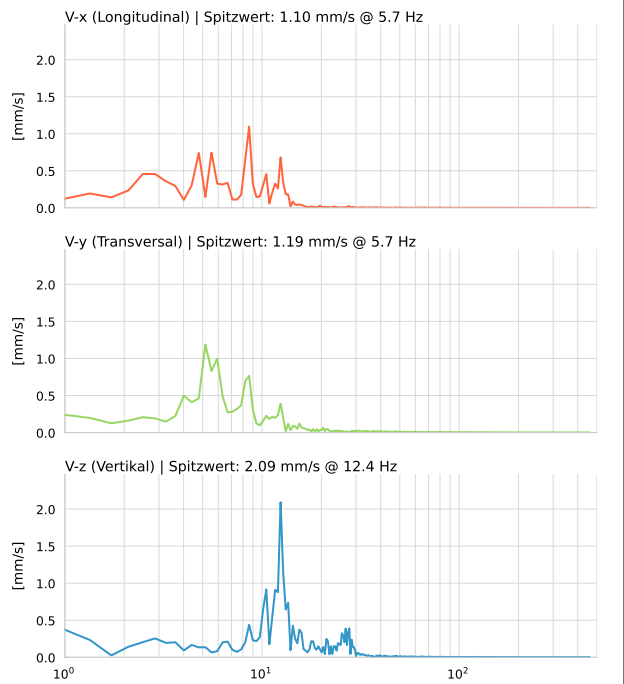


DATEI: 2493-HS5-18052026-191533_raw.csv

Aufzeichnungsdauer: 5.23 s | Abtastrate: 1000 Hz

| | |
|----------|--------------------------|
| Datum | 18.05.2026 |
| Zeit | 19:15:33 |
| Event-ID | 2493-HS5-18052026-191533 |
| Status | Ereignis |
| X | 1.10 mm/s @ 5.7 Hz |
| Y | 1.19 mm/s @ 5.7 Hz |
| Z | 2.09 mm/s @ 12.4 Hz |
| Vn | 2.64 mm/s @ 12.4 Hz |

SPEKTRALANALYSE - KOMPONENTEN FFT



| Kanal | Spitzwert | Spektrum 25% | Spektrum 50% | Spektrum 75% |
|-------|-----------|--------------|--------------|--------------|
| X | 5.7 Hz | 4.8 Hz | 8.2 Hz | 11.7 Hz |
| Y | 5.7 Hz | 5.2 Hz | 8.2 Hz | 19.7 Hz |
| Z | 12.4 Hz | 10.5 Hz | 13.2 Hz | 25.4 Hz |

SPEKTRALANALYSE - FFT (DIN 4150-3)

