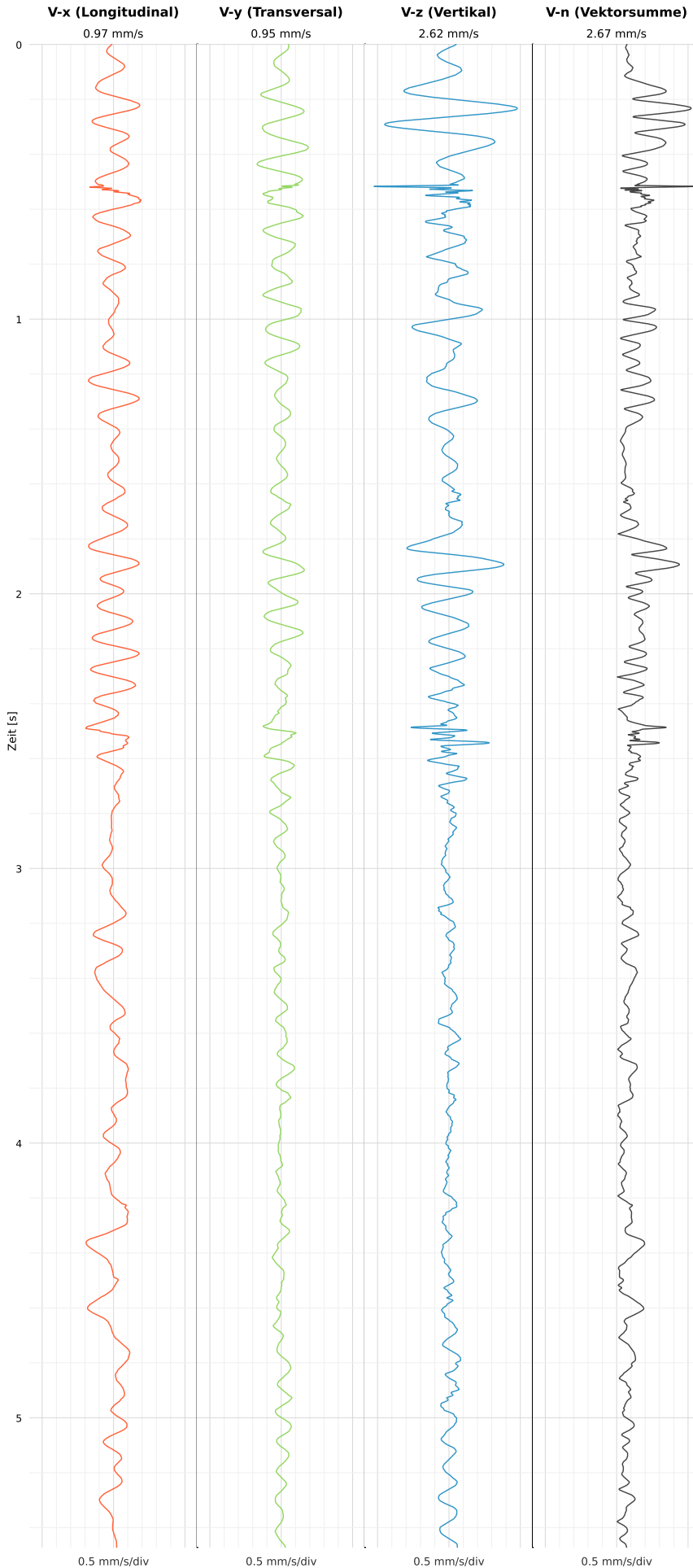


SCHWINGGESCHWINDIGKEIT

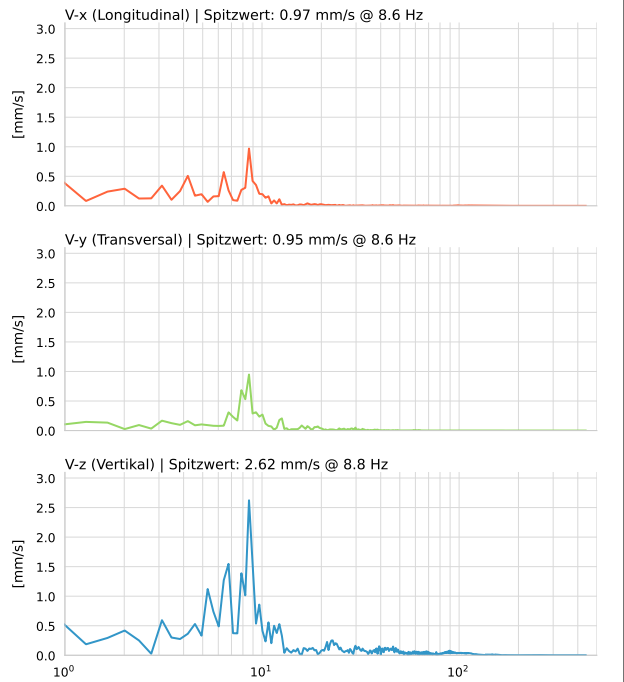


DATEI: 2493-PG-4-12052026-063805_raw.csv

Aufzeichnungsdauer: 5.47 s | Abtastrate: 1000 Hz

| | |
|----------|---------------------------|
| Datum | 12.05.2026 |
| Zeit | 08:38:05 |
| Event-ID | 2493-PG-4-12052026-063805 |
| Status | Ereignis |
| X | 0.97 mm/s @ 8.6 Hz |
| Y | 0.95 mm/s @ 8.6 Hz |
| Z | 2.62 mm/s @ 8.8 Hz |
| Vn | 2.67 mm/s @ 8.8 Hz |

SPEKTRALANALYSE - KOMPONENTEN FFT



| Kanal | Spitzwert | Spektrum 25% | Spektrum 50% | Spektrum 75% |
|-------|-----------|--------------|--------------|--------------|
| X | 8.6 Hz | 4.2 Hz | 8.2 Hz | 10.8 Hz |
| Y | 8.6 Hz | 7.5 Hz | 9.0 Hz | 18.5 Hz |
| Z | 8.8 Hz | 7.1 Hz | 11.5 Hz | 45.1 Hz |

SPEKTRALANALYSE - FFT (DIN 4150-3)

