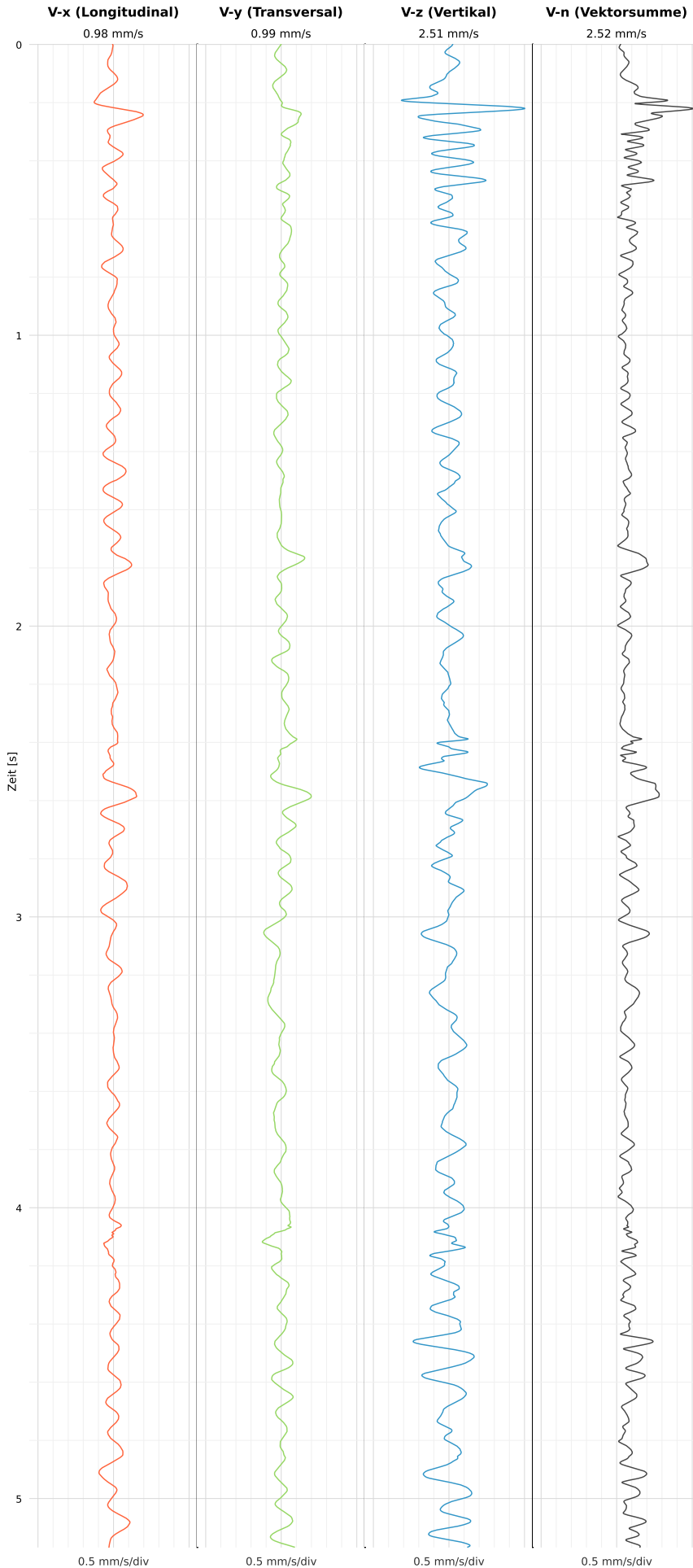


## SCHWINGGESCHWINDIGKEIT

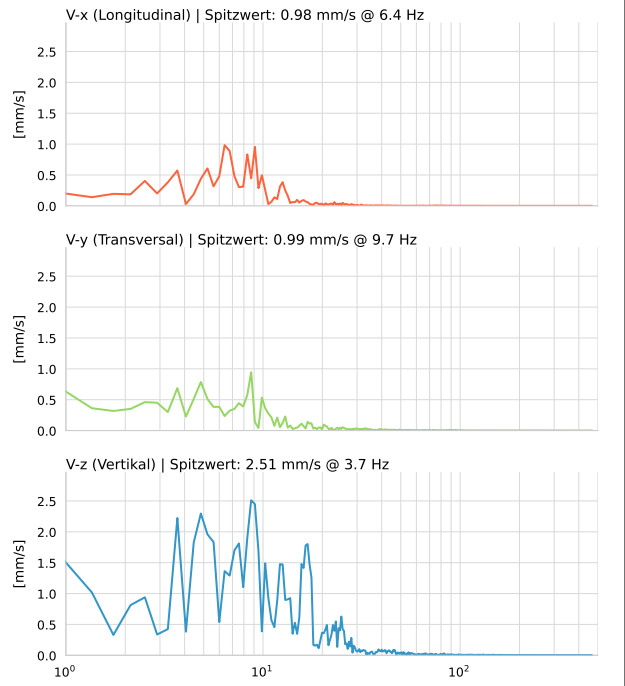


DATEI: 2493-PG-4-12052026-102432\_raw.csv

Aufzeichnungsdauer: 5.17 s | Abtastrate: 1000 Hz

Datum	12.05.2026
Zeit	12:24:32
Event-ID	2493-PG-4-12052026-102432
Status	Ereignis
X	0.98 mm/s @ 6.4 Hz
Y	0.99 mm/s @ 9.7 Hz
Z	2.51 mm/s @ 3.7 Hz
Vn	2.52 mm/s @ 3.7 Hz

## SPEKTRALANALYSE - KOMPONENTEN FFT



Kanal	Spitzwert	Spektrum 25%	Spektrum 50%	Spektrum 75%
X	6.4 Hz	5.2 Hz	7.9 Hz	12.2 Hz
Y	9.7 Hz	3.3 Hz	7.5 Hz	15.7 Hz
Z	3.7 Hz	6.4 Hz	10.6 Hz	17.2 Hz

## SPEKTRALANALYSE - FFT (DIN 4150-3)

