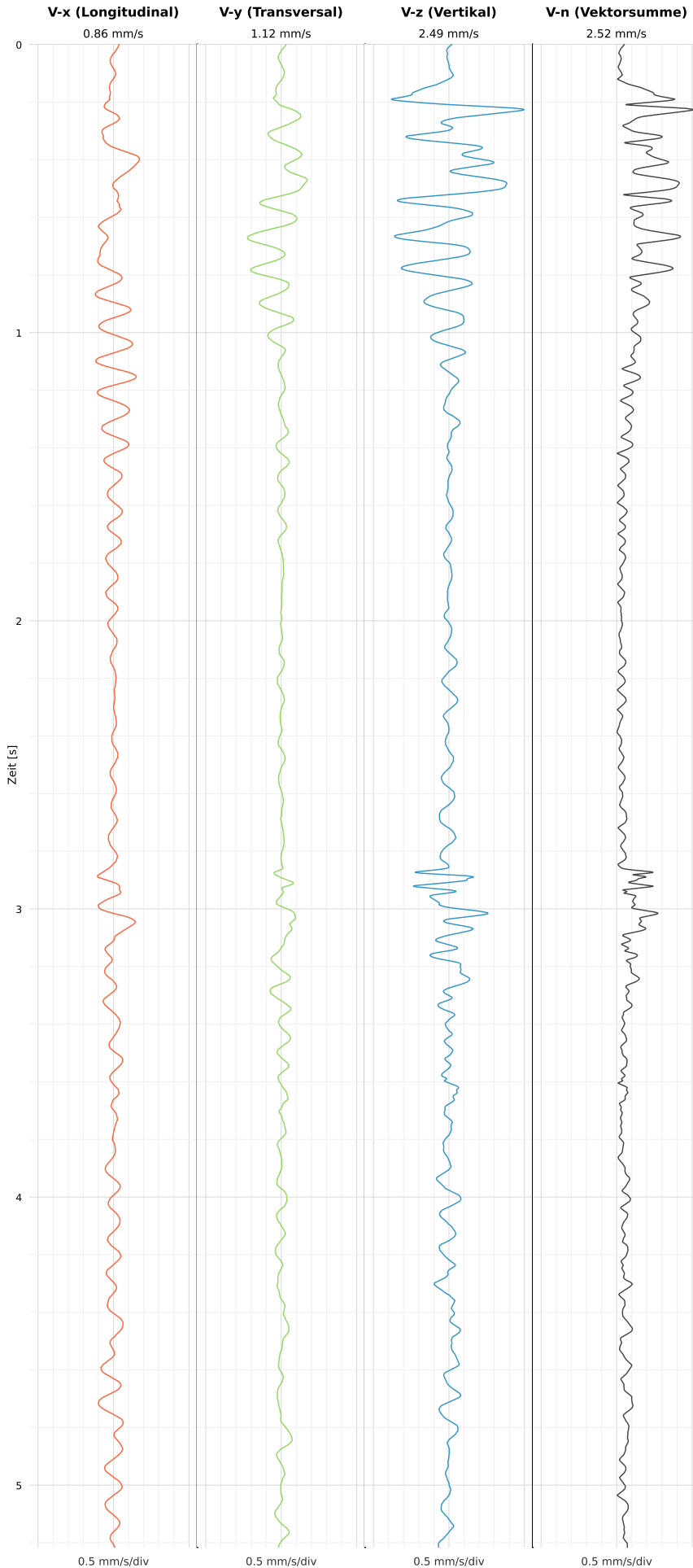


SCHWINGGESCHWINDIGKEIT

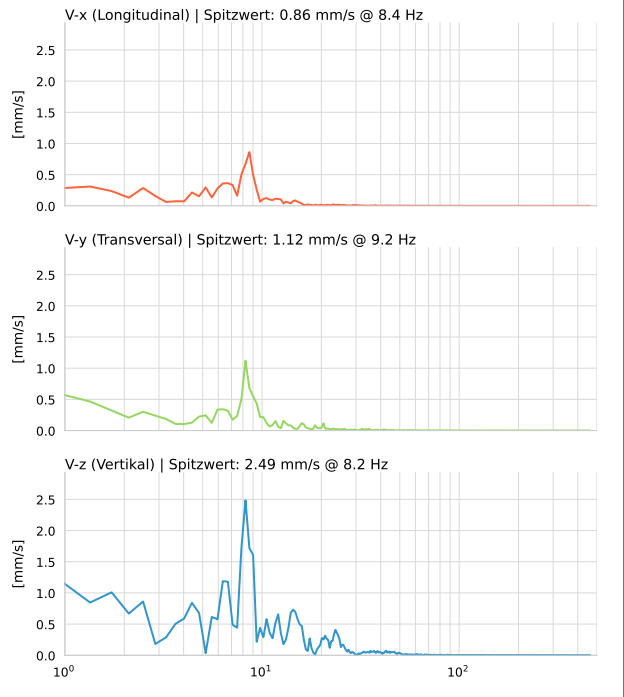


DATEI: 2493-PG-4-12052026-102454_raw.csv

Aufzeichnungsdauer: 5.22 s | Abtastrate: 1000 Hz

Datum	12.05.2026
Zeit	12:24:54
Event-ID	2493-PG-4-12052026-102454
Status	Ereignis
X	0.86 mm/s @ 8.4 Hz
Y	1.12 mm/s @ 9.2 Hz
Z	2.49 mm/s @ 8.2 Hz
Vn	2.52 mm/s @ 8.2 Hz

SPEKTRALANALYSE - KOMPONENTEN FFT



Kanal	Spitzwert	Spektrum 25%	Spektrum 50%	Spektrum 75%
X	8.4 Hz	5.2 Hz	8.2 Hz	10.2 Hz
Y	9.2 Hz	4.0 Hz	8.2 Hz	12.8 Hz
Z	8.2 Hz	6.3 Hz	9.0 Hz	19.4 Hz

SPEKTRALANALYSE - FFT (DIN 4150-3)

