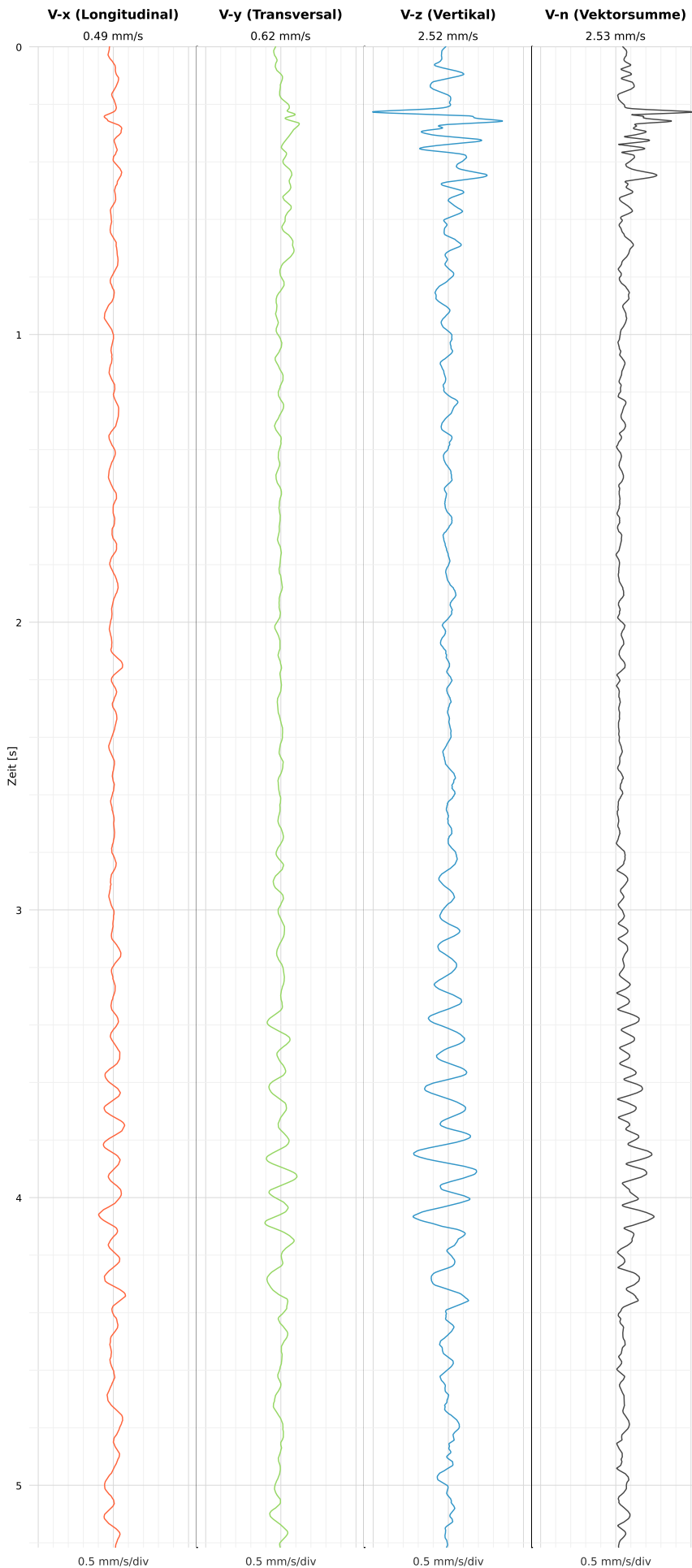


## SCHWINGGESCHWINDIGKEIT

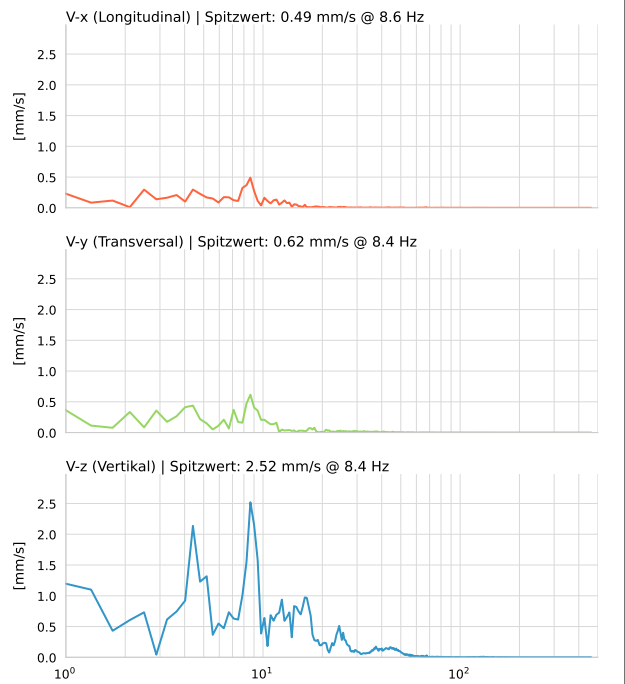


**DATEI: 2493-PG-4-12052026-102712\_raw.csv**

Aufzeichnungsdauer: 5.22 s | Abtastrate: 1000 Hz

Datum	12.05.2026
Zeit	12:27:12
Event-ID	2493-PG-4-12052026-102712
Status	Ereignis
X	0.49 mm/s @ 8.6 Hz
Y	0.62 mm/s @ 8.4 Hz
Z	2.52 mm/s @ 8.4 Hz
Vn	2.53 mm/s @ 8.4 Hz

## SPEKTRALANALYSE - KOMPONENTEN FFT



Kanal	Spitzwert	Spektrum 25%	Spektrum 50%	Spektrum 75%
X	8.6 Hz	4.4 Hz	8.2 Hz	12.8 Hz
Y	8.4 Hz	3.6 Hz	8.2 Hz	11.7 Hz
Z	8.4 Hz	6.7 Hz	12.1 Hz	20.9 Hz

## SPEKTRALANALYSE - FFT (DIN 4150-3)

