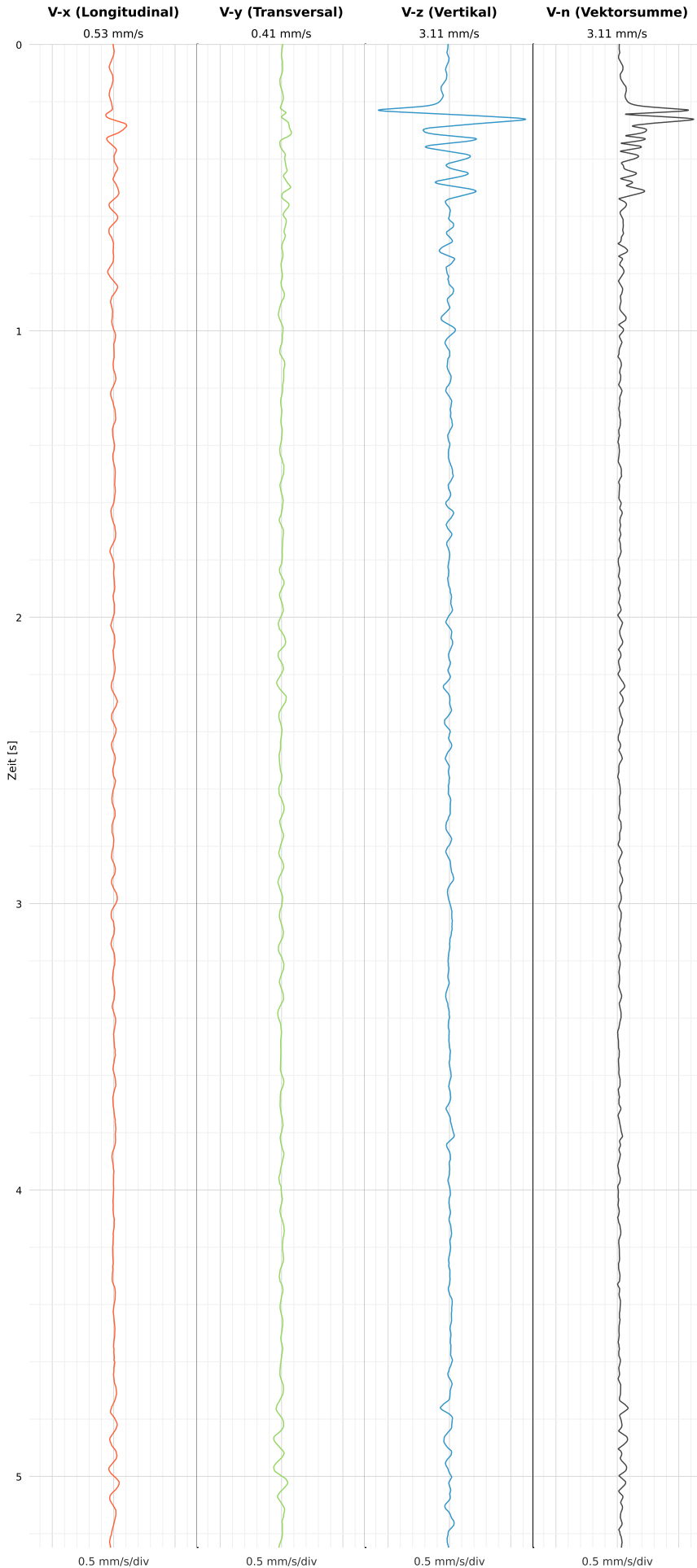


## SCHWINGGESCHWINDIGKEIT

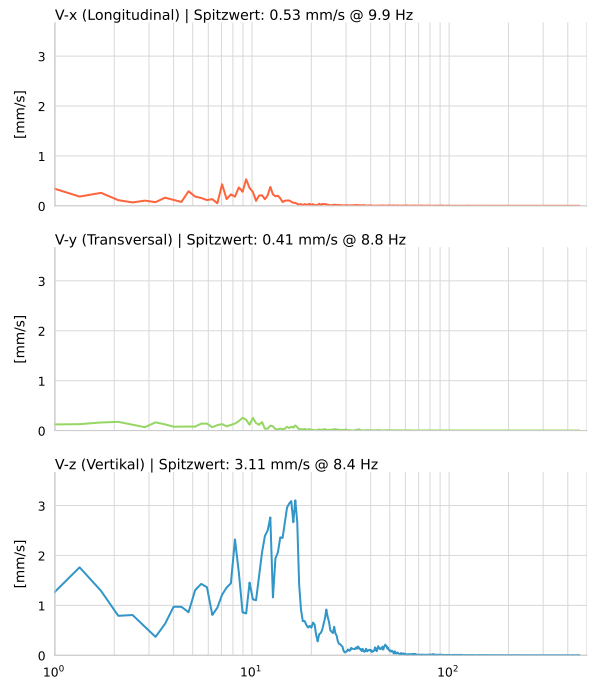


DATEI: 2493-PG-4-12052026-110748\_raw.csv

Aufzeichnungsdauer: 5.25 s | Abtastrate: 1000 Hz

Datum	12.05.2026
Zeit	13:07:48
Event-ID	2493-PG-4-12052026-110748
Status	Hinweis
X	0.53 mm/s @ 9.9 Hz
Y	0.41 mm/s @ 8.8 Hz
Z	3.11 mm/s @ 8.4 Hz
Vn	3.11 mm/s @ 8.4 Hz

## SPEKTRALANALYSE - KOMPONENTEN FFT



Kanal	Spitzwert	Spektrum 25%	Spektrum 50%	Spektrum 75%
X	9.9 Hz	6.3 Hz	9.7 Hz	14.7 Hz
Y	8.8 Hz	3.6 Hz	9.3 Hz	17.0 Hz
Z	8.4 Hz	8.6 Hz	14.3 Hz	17.7 Hz

## SPEKTRALANALYSE - FFT (DIN 4150-3)

