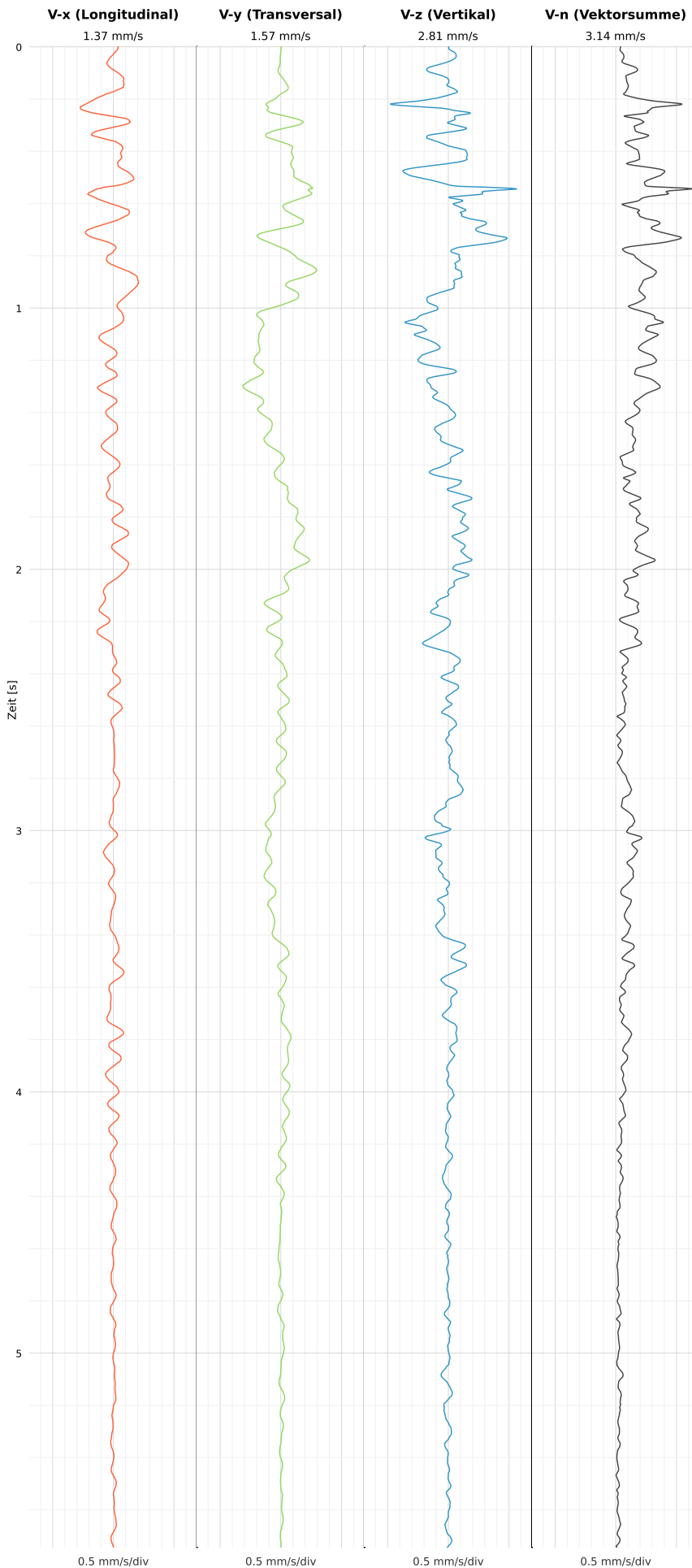


## SCHWINGGESCHWINDIGKEIT

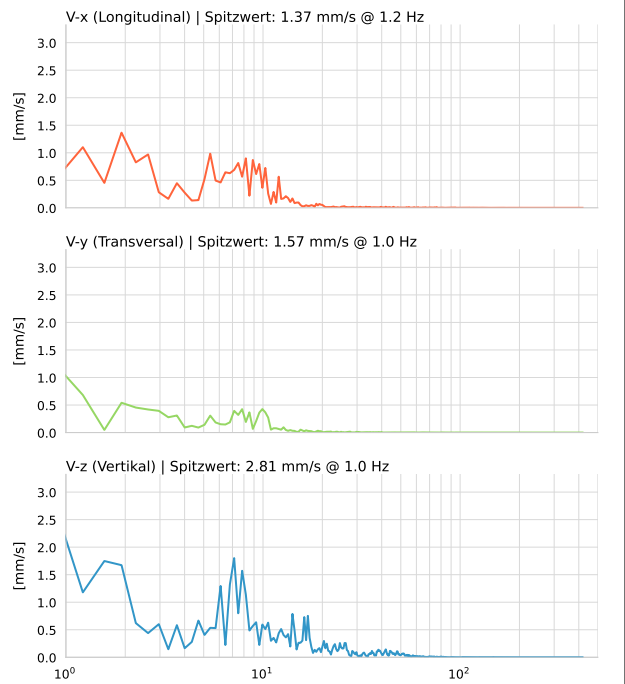


DATEI: 2493-PG-4-12052026-131433\_raw.csv

Aufzeichnungsdauer: 5.74 s | Abtastrate: 1000 Hz

Datum	12.05.2026
Zeit	15:14:33
Event-ID	2493-PG-4-12052026-131433
Status	Ereignis
X	1.37 mm/s @ 1.2 Hz
Y	1.57 mm/s @ 1.0 Hz
Z	2.81 mm/s @ 1.0 Hz
Vn	3.14 mm/s @ 1.0 Hz

## SPEKTRALANALYSE - KOMPONENTEN FFT



Kanal	Spitzwert	Spektrum 25%	Spektrum 50%	Spektrum 75%
X	1.2 Hz	3.0 Hz	7.1 Hz	10.3 Hz
Y	1.0 Hz	0.9 Hz	4.4 Hz	9.2 Hz
Z	1.0 Hz	3.7 Hz	8.5 Hz	17.6 Hz

## SPEKTRALANALYSE - FFT (DIN 4150-3)

