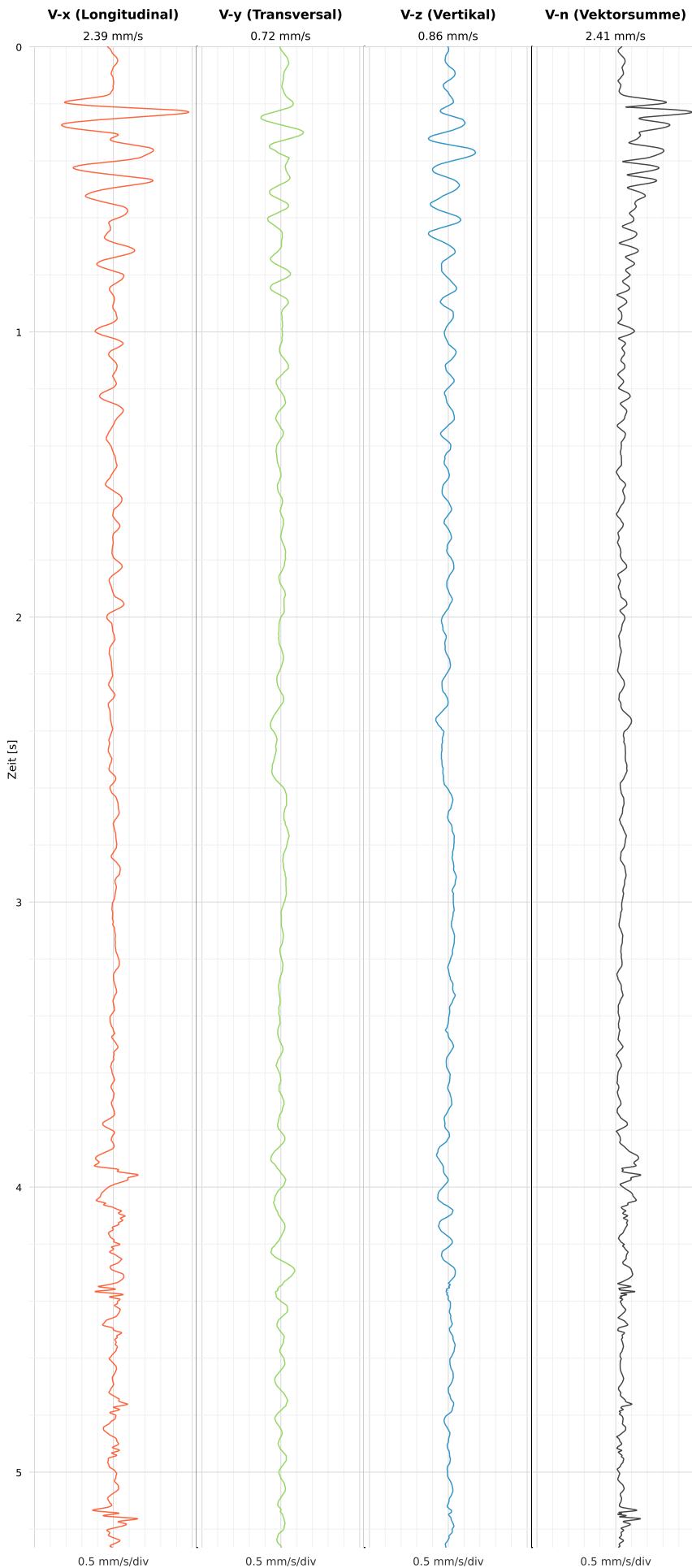


## SCHWINGGESCHWINDIGKEIT

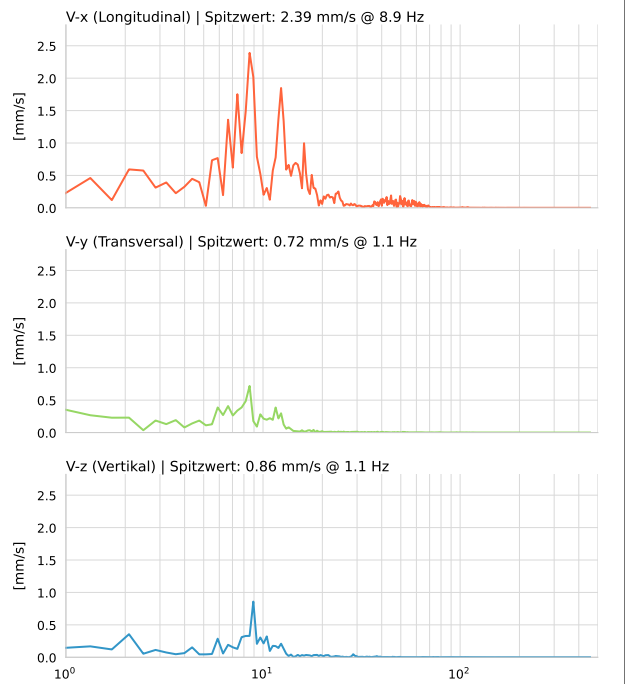


**DATEI: 2493-PG-4-12052026-182832\_raw.csv**

Aufzeichnungsdauer: 5.26 s | Abtastrate: 1000 Hz

Datum	12.05.2026
Zeit	20:28:32
Event-ID	2493-PG-4-12052026-182832
Status	Ereignis
X	2.39 mm/s @ 8.9 Hz
Y	0.72 mm/s @ 1.1 Hz
Z	0.86 mm/s @ 1.1 Hz
Vn	2.41 mm/s @ 8.9 Hz

## SPEKTRALANALYSE - KOMPONENTEN FFT



Kanal	Spitzwert	Spektrum 25%	Spektrum 50%	Spektrum 75%
X	8.9 Hz	8.2 Hz	12.3 Hz	19.2 Hz
Y	1.1 Hz	4.7 Hz	8.2 Hz	11.6 Hz
Z	1.1 Hz	4.4 Hz	8.9 Hz	12.0 Hz

## SPEKTRALANALYSE - FFT (DIN 4150-3)

