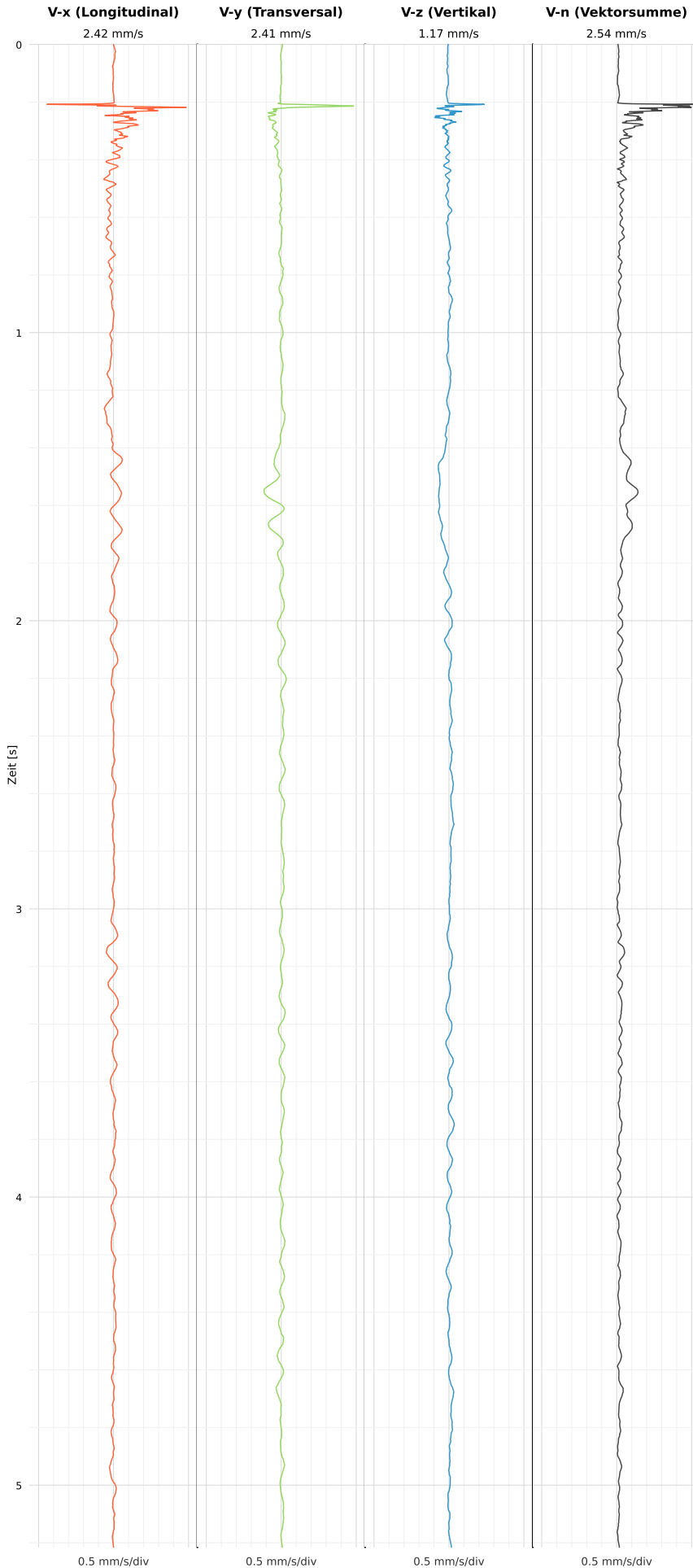


## SCHWINGGESCHWINDIGKEIT

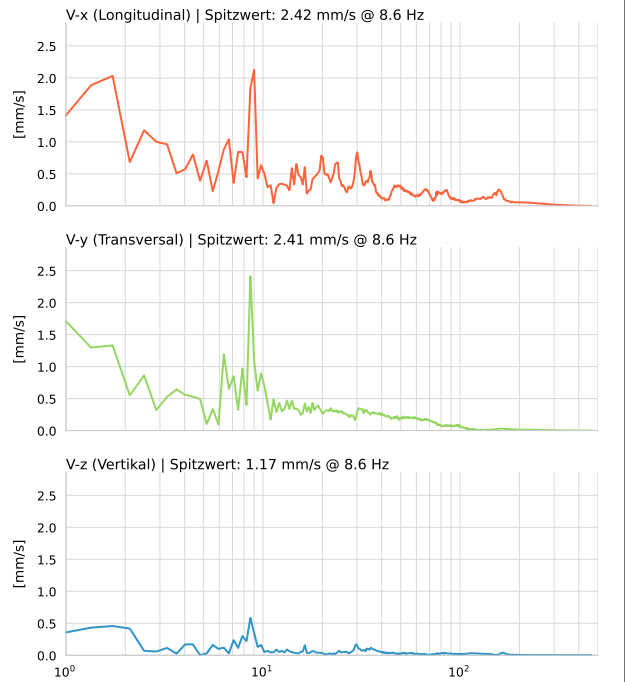


DATEI: 2493-PG-4-12052026-214947\_raw.csv

Aufzeichnungsdauer: 5.22 s | Abtastrate: 1000 Hz

Datum	12.05.2026
Zeit	23:49:47
Event-ID	2493-PG-4-12052026-214947
Status	Ereignis
X	2.42 mm/s @ 8.6 Hz
Y	2.41 mm/s @ 8.6 Hz
Z	1.17 mm/s @ 8.6 Hz
Vn	2.54 mm/s @ 8.6 Hz

## SPEKTRALANALYSE - KOMPONENTEN FFT



Kanal	Spitzwert	Spektrum 25%	Spektrum 50%	Spektrum 75%
X	8.6 Hz	16.3 Hz	50.4 Hz	137.8 Hz
Y	8.6 Hz	9.0 Hz	30.1 Hz	61.9 Hz
Z	8.6 Hz	7.9 Hz	34.3 Hz	104.9 Hz

## SPEKTRALANALYSE - FFT (DIN 4150-3)

