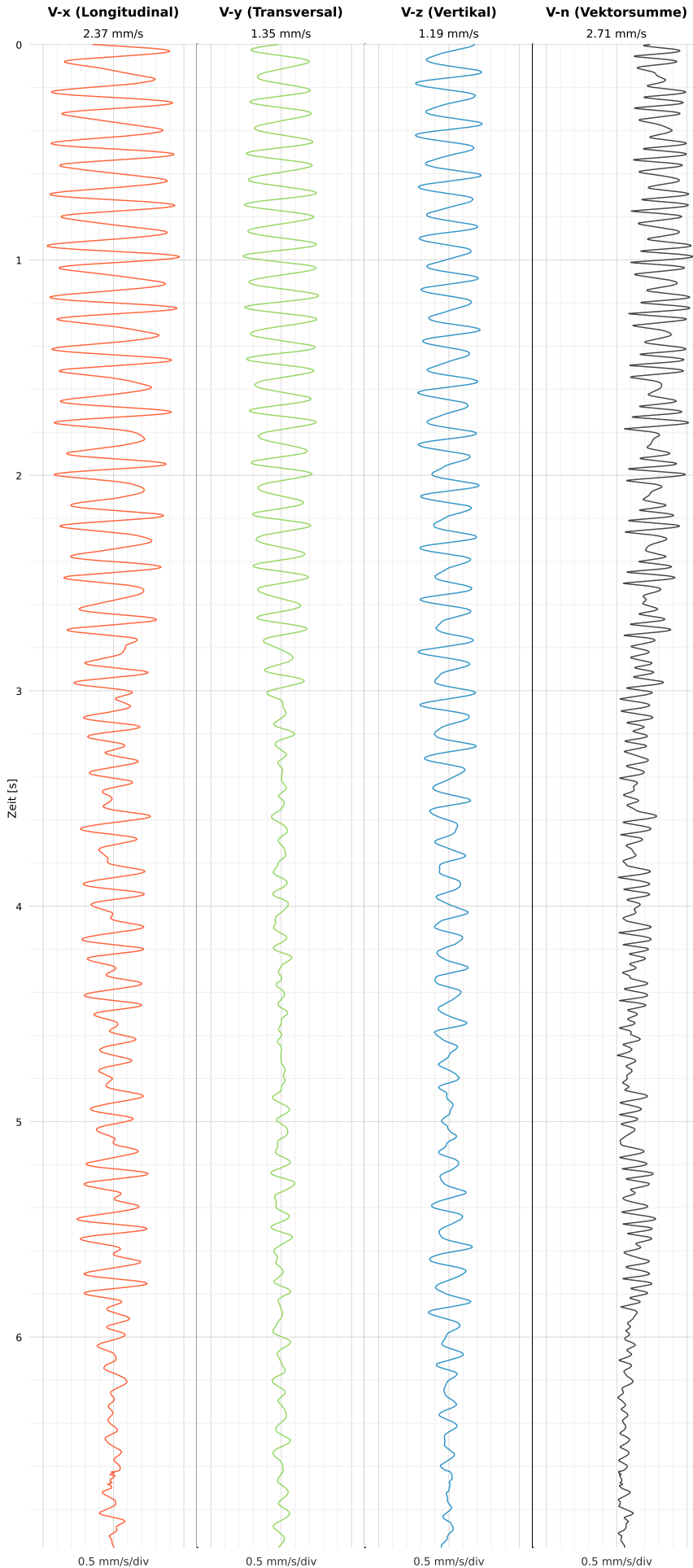


SCHWINGGESCHWINDIGKEIT

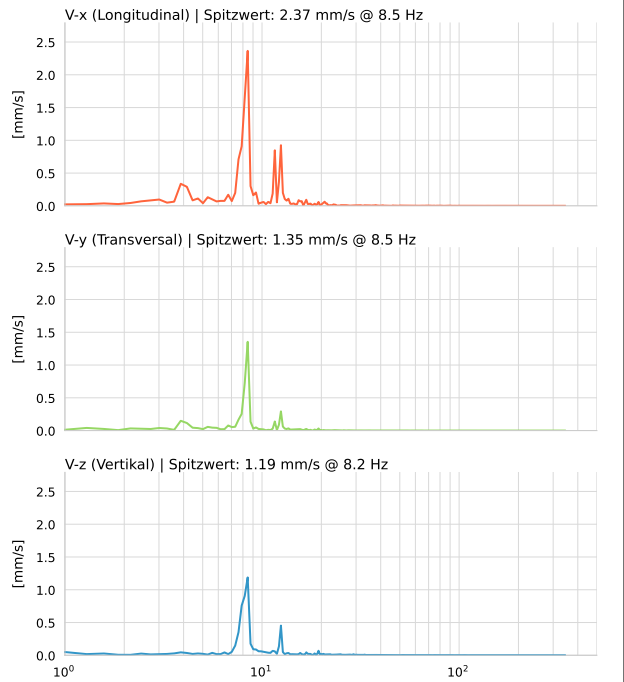


DATEI: 2493-PG-4-12052026-223727_raw.csv

Aufzeichnungsdauer: 6.98 s | Abtastrate: 1000 Hz

Datum	13.05.2026
Zeit	00:37:27
Event-ID	2493-PG-4-12052026-223727
Status	Ereignis
X	2.37 mm/s @ 8.5 Hz
Y	1.35 mm/s @ 8.5 Hz
Z	1.19 mm/s @ 8.2 Hz
Vn	2.71 mm/s @ 8.5 Hz

SPEKTRALANALYSE - KOMPONENTEN FFT



Kanal	Spitzwert	Spektrum 25%	Spektrum 50%	Spektrum 75%
X	8.5 Hz	7.9 Hz	8.5 Hz	12.5 Hz
Y	8.5 Hz	7.9 Hz	8.5 Hz	11.6 Hz
Z	8.2 Hz	8.2 Hz	8.5 Hz	19.9 Hz

SPEKTRALANALYSE - FFT (DIN 4150-3)

